



This open access document is published as a preprint in the Beilstein Archives with doi: 10.3762/bxiv.2019.120.v1 and is considered to be an early communication for feedback before peer review. Before citing this document, please check if a final, peer-reviewed version has been published in the Beilstein Journal of Nanotechnology.

This document is not formatted, has not undergone copyediting or typesetting, and may contain errors, unsubstantiated scientific claims or preliminary data.

Preprint Title Magnetic-plasmonic Ni@Au core-shell nanoparticle arrays and their SERS properties

Authors Lu Wang, Zuobin Wang, Li Li, Jingran Zhang, Jinyun Liu, Jing Hu, Xiaomin Wu, Zhankun Weng, Xueying Chu, Jinhua Li and Zhongliang Qiao

Publication Date 15 Okt 2019

Article Type Full Research Paper

Supporting Information File 1 Supporting Information.docx; 3.3 MB

ORCID® iDs Lu Wang - <https://orcid.org/0000-0002-8167-5573>; Zuobin Wang - <https://orcid.org/0000-0002-7168-0918>

Magnetic-plasmonic Ni@Au core-shell nanoparticle arrays and their SERS properties

Lu Wang^{a,c}, Zuobin Wang^{a,c}, Li Li^{a,c*}, Jingran Zhang^a, Jinyun Liu^d, Jing Hu^a, Xiaomin Wu^a, Zhankun Weng^{a,c}, Xueying Chu^e, Jinhua Li^e and Zhongliang Qiao^{b*}*

^aInternational Research Centre for Nano Handling and Manufacturing of China, Changchun University of Science and Technology, Changchun 130022, China

^bKey Laboratory of Laser Technology and Optoelectronic Functional Materials of Hainan Province, School of Physics and Electronic Engineering, Hainan Normal University, Haikou 571158, China

^cMinistry of Education Key Laboratory for Cross-Scale Micro and Nano Manufacturing, Changchun University of Science and Technology, Changchun 130022, China

^dCollege of Information Engineering, North China University of Science and Technology, Tangshan 063210, China

^eSchool of Science, Changchun University of Science and Technology, Changchun 130022, China

Keywords: surface enhanced Raman scattering; magnetic-plasmonic nanoparticles; core-shell nanoparticles; ferromagnetic nanoparticles.

ABSTRACT: In this paper, large-area magnetic-plasmonic Ni@Au core-shell nanoparticle arrays (NPAs) with tunable compositions were successfully fabricated by direct laser interference ablation (DLIA) incorporated with thermal dewetting method. The magnetic properties of the Ni@Au core-shell NPAs were analyzed and the saturation

magnetization (M_s) of the $Ni_{80}@Au_{20}$ nanoparticles was found higher than that of nickel-only nanoparticles with the same diameter. The surface enhanced Raman scattering (SERS) property of the Ni@Au core-shell NPAs was then examined using the Rhodamine 6G (R6G) as a Raman reporter molecule and a SERS enhancement factor of 2.5×10^6 was achieved on the $Ni_{50}@Au_{50}$ NPA substrate, which was of 9 times higher than that for Au nanoparticles with the same size distribution. It was due to the enhanced local surface plasmon resonance (LSPR) between the ferromagnetic Ni cores and the surface polariton of Au shells of each nanoparticle. The fabrication of the Ni@Au core-shell NPAs with different compositions offers a new avenue to tailor the optical and magnetic properties of the nanostructured films for chemical and diagnostic applications.

1. Introduction

Gold nanoparticles (NPs) exhibit fascinating bio-compatibility and optical properties owing to their strong localized surface plasmon resonance (LSPR), and were incredibly useful in a wide range of chemical and biological applications, such as biomedicine [1-3], biological optical imaging [4], sensing [5], energy [6], catalysis [7] and surface enhanced Raman scattering (SERS) [8]. Among these applications, large-area Au nanoparticle arrays (NPAs) are good SERS substrates as an attractive tool for measuring a small number of molecules with high sensitivity [9-13]. The resonant interactions of the Au NPs with incident electromagnetic radiation facilitate the enhanced Raman scattering. With the development of plasmonic metamaterials and magnetic metamaterials in recent years [14-16], magnetic-plasmonic core-shell nanoparticles composed of magnetic cores with plasmonic shells, are currently the subject of research to achieve multifunctionality in a

single material [17-19]. They have shown a number of outstanding plasmonic resonance effects as well as magnetic properties [20]. Meanwhile, coating pure magnetic metals with Au shells provides a surface layer with relatively inert chemical properties that can maintain the magnetic properties of the core materials and increase biological compatibility.

Different synthetic methods have been developed for the fabrication of bimetallic particles [21, 22]. The common techniques include wet chemical synthesis, photochemical synthesis, sputter deposition, electroless plating, and electrochemical synthesis. Different nanostructures can be obtained depending on the applied conditions. However, the final nanostructures synthesized by chemical methods are normally colloidal and the synthesis usually contains multi steps. Besides, additional steps of assembly may be required for the NPAs to make the particle monolayer on a substrate. Recently, different methods have been reported to fabricate magnetic-plasmonic nanostructure arrays for specific purpose. Ni-Au bimetallic NPAs were fabricated by laser annealing of bimetallic thin films [23]. $\text{Fe}_3\text{O}_4@Au$ -NP magnetic field induced assembly was used for the fabrication of $\text{Fe}_3\text{O}_4@Au@Ag$ nanoflower chains [24]. Ultrathin alumina mask technique was used during the deposition of Ni and Au for the synthesis of Ni/Au hybrid NPAs as a SERS substrate [25]. Despite these efforts, an appropriate method for fabricating high-throughput large-area magnetic-plasmonic core-shell NPA substrates with high SERS enhancement and excellent reproducibility remains a fundamental challenge.

We have previously introduced an innovative approach to generate ordered Ni-Au NPAs on the laser interference-structured substrates by thermal dewetting [26]. The direct laser interference ablation (DLIA) enables the formation of periodic patterns with defined long-range ordered bimetallic nanoparticles on the templates. The research has shown that

bimetallic NPAs fabricated by DLIA-templated dewetting method are reliable and controllable. Therefore, a series of Ni@Au core-shell NPAs with different compositions of Au and Ni were synthesized in this work. The effect of synthesis conditions on the formation of core-shell nanoparticles were investigated and the core-shell structure of nanoparticles was characterized in detail. Furthermore, the magnetic properties of the Ni@Au core-shell NPAs were analyzed and compared with the nickel-only NPAs. Finally, SERS measurement results of R6G on the as-prepared Ni@Au core-shell NPA substrates were compared to observe the dependence of SERS intensity on the metal compositions.

2. Experimental section

2.1. Direct laser interference ablation

In this experiment, a nanosecond laser (Innolas) three-beam interference ablation system with a wavelength of 1064 nm, a frequency of 10 Hz and a pulse duration of 7 ns was employed for the DLIA (for more detail see our previous work in Ref. [26]). The geometric configuration of three beams is an equilateral triangle and the incident angle is 4.1° . The laser interference fluence of 300 mJ/cm^2 and the pulse number of 30 were used to process all silicon samples. All the samples used in the experiment were monocrystalline p-doped silicon wafers. The morphology of the as-ablated silicon substrates was shown in Figure 1(a).

2.2 Bilayer deposition

The Ni-Au bilayer of 20 nm (10 nm Ni and 10 nm Au) was deposited onto the as-ablated silicon substrates utilizing a Turbo sputter coater in which the Au was chosen as the top layer. And the surface morphology of the silicon substrate after the film deposition was

shown in Figure 1(b).

2.3 Vacuum rapid thermal annealing

Vacuum rapid thermal annealing (temperature 950 °C, time 1 to 10 min) was used to bring on the dewetting of Ni-Au bilayer films on all the as-deposited substrates. The as-annealed Ni₅₀Au₅₀ NPAs were finally prepared after the heating time of 5 min and subsequent fast cooling process, as depicted in Figures 1(c-d). A large-area Ni₅₀Au₅₀ NPA SEM image was also presented (Supporting Information Figure S1).

Based on our previous study, the Ni-Au NPAs with different compositions were able to be synthesized by changing the initial composition of the bilayer. The volume ratio of Au to Ni was adjusted while the thickness of the bilayer was 20 nm, so that a series of NPAs were successfully prepared as Ni₁₀₀, Ni₈₀Au₂₀, Ni₆₀Au₄₀, Ni₅₀Au₅₀, Ni₄₀Au₆₀, Ni₂₀Au₈₀ and Au₁₀₀, respectively. As per previous study, it was found that the size and density of the annealed particle as well as the pattern of the arrays were able to be controlled by the applied laser-interference parameters [26]. Thus, we processed all the substrates with the same DLIA parameters, including the laser interference fluence, pulse number and their geometric configuration, so that the Ni-Au NPAs of different compositions obtained after annealing have the same morphology as Ni₅₀Au₅₀, as depicted in Figures 1(c-d).

2.4 SERS measurements

SERS measurements were performed using Rhodamine 6G (R6G) as molecular probes. A micro-Raman spectroscopic system (labRAM HR E, HORIBA) equipped with a 532 nm laser (CNILASER MLL-532) and a 50× focusing objective was used to characterize the SERS properties. The laser power of approximate 1mW and beam diameter of 1 mm were

used to excite the samples. Seven types of samples with Ni NPAs, Ni-Au NPAs and Au NPAs on the substrates were immersed in the 10^{-6} M R6G aqueous solution for 30 min, respectively. A gentle nitrogen flow was used to dry the samples after that. Three locations on each sample were averaged for each Raman and SERS spectrum presented.

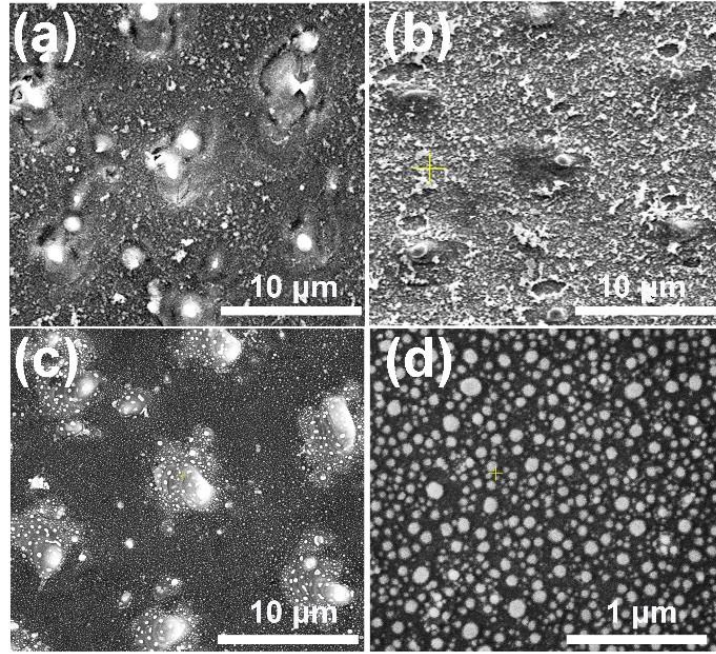


Figure 1: (a) SEM images of the as-ablated silicon surface, (b) corresponding silicon surface with a 20 nm Ni-Au bilayer film deposition, (c, d) corresponding Ni₅₀Au₅₀ NPAs formed after the vacuum rapid thermal annealing of 950 °C for 5 min.

2.5 Instrumentation

The morphologies of the as-prepared silicon and Ni-Au NPA substrates were imaged by a high-resolution scanning electron microscope (SEM, FEI QUANT-250 FEG). Energy-dispersive x-ray spectroscopy (EDS, Oxford Instruments) was used to analyze the element composition. In situ X-ray photoelectron spectroscopy (XPS) (ESCALAB 250) was applied for the investigation of the crystal structure of the final composite nanoparticles.

Transmission electron microscopy (TEM) and high resolution transmission electron microscopy (HRTEM) sample observations were performed on a JEM-2100F transmission electron microscope. High-angle annular dark field (HAADF) scanning TEM images were carried out on the JEM-2100 TEM with an HAADF detector. A superconducting quantum interference device (SQUID) magnetometer (Quantum Design-MPMS-XL7) was used to perform the magnetic measurements.

3. Results and discussion

3.1 Synthesis of Ni@Au core-shell nanoparticles

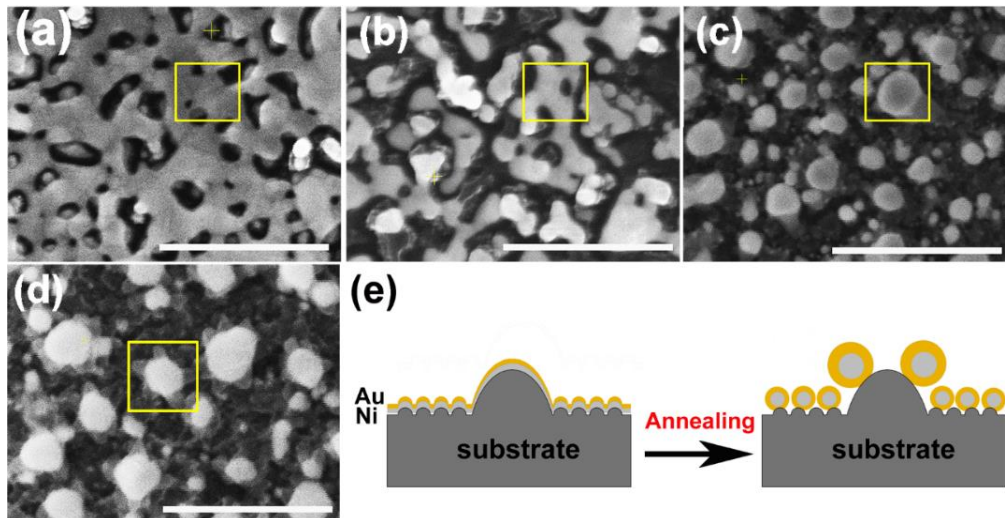


Figure 2: SEM images of the metal bilayer taken at different annealing times of 1 min (a), 2 min (b), 5 min (c) and 10 min (d), showing the dewetting phenomenon (scale bar = 500 nm). (e) Schematic illustration of the formation of Ni@Au core-shell nanoparticles in (a-c). The conversion of the thin bilayer into a rivulet upon dewetting, followed by an array of core-shell nanoparticles.

According to the phase diagram of Ni-Au system, at the high temperature of 800-1000 °C, a homogeneous solid fcc solution with a miscible gap across the entire concentration range was shown [27]. Therefore, the heating times from 1 to 10 min at the

temperature of 950 °C were chosen for the experiments to find the optimal synthesis conditions for the core-shell structure. Figure 2 shows the morphology of the metal bilayer as a function of heating time. The metallic film became thinner at the edges between the nanostructures, leading to the holes in the film when the annealing begins at the heating time of 1 min, as displayed in Figure 2(a). The retraction of the rims of the hole formed the rivulets due to the Rayleigh instability. Then, the rivulets were about to rupture and fragment to form nanoparticles at the heating time of 2 min, as shown in Figure 2(b). We assume it occurs in the same location for the individual Ni and Au layers before the complete intermixture of the metal bilayer. As the heating times up to 5 min, the Ni and Au layers are completely intermixed, and spherical Ni-Au nanoparticles are formed, as depicted in Figure 2(c). After that, continuous heating causes the two metals to begin to diffuse into each other and nucleate when the temperature is rapidly decreased. It is known that the diffusion of Ni crystals into Au atoms is more likely than the diffusion of Au atoms into Ni crystals [28]. Also, the heteronucleation caused by a temperature drop will suppress the homonucleation and lead to the formation of a gold shell on the nickel core [29], as indicated in Figure 2(e). However, when the time up to 10 min, the flower-like nanoparticles are formed, as displayed in Figure 2(d). The petal-like substance around the crystallized nanoparticles is considered to be silicon oxide, which is presumably formed by the catalysis of Au at the Au/Si interface [30, 31]. The EDS mapping scans of a single crystallized Ni₅₀Au₅₀ nanoparticle in Figure 2(d) were also provided (Supporting Information Figure S2). It can be seen that the O-K signal at the petal locations is much higher than that at the surrounding substrate.

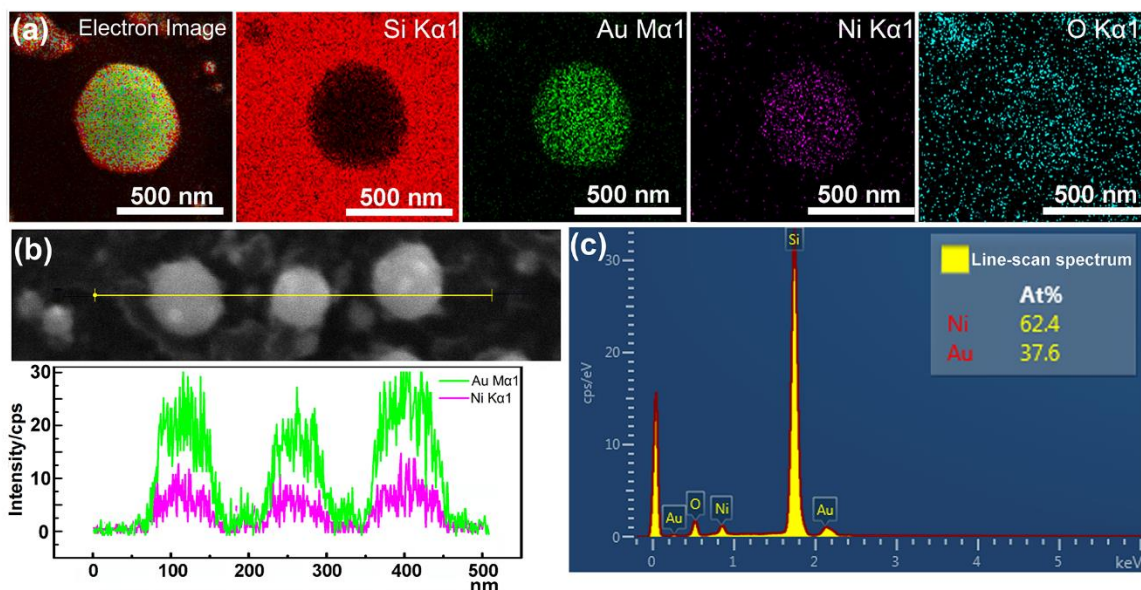


Figure 3: (a) EDS mapping images of an individual $\text{Ni}_{50}\text{Au}_{50}$ nanoparticle and the corresponding element mapping images of Si-K, Au-M, Ni-K and O-K. (b) EDS line-scan analysis of the nanoparticles below 100 nm showing the distribution of the two metals. (c) EDS point-scan spectrum of the particles in (b).

The EDS measurement of an individual spherical $\text{Ni}_{50}\text{Au}_{50}$ nanoparticle with the diameter of 400 nm was used to analyze the Au and Ni structure of the nanoparticle, as shown in Figure 3(a). The corresponding element mapping images show that the Au can be detected on the entire nanoparticle, and the signal is uniform in both the periphery and the center, indicating that gold mainly exists in the shell of the nanoparticle. The Ni-K signals are weak in the periphery and strong in the core, suggesting that nickel is mainly distributed in the core of the nanoparticle. Figure 3(b) shows both the Au-M and Ni-K by line scanning the nanoparticles, which confirms the homogenous distribution of the Au and Ni, even if the annealed particles are less than 100 nm. The point-scan analysis shows the existence of C, O, Si, Au and Ni elements in the nanoparticle and on the substrate. By excluding other elements, the molar ratios of Au and Ni in the $\text{Ni}_{50}\text{Au}_{50}$ nanoparticles were calculated to be 37.6% and 62.4%, respectively, which are similar to the molar fractions of

equal volumes of Au and Ni, as displayed in Figure 3(c). The Au signal is much stronger than the Ni signal in the line/mapping scan images, which further proves that the Ni-Au hybrid nanoparticle is of the Ni@Au core-shell structure. This is also clearly confirmed by the XPS and TEM data of the Ni₅₀@Au₅₀ nanoparticle in the morphological and characterization part. Due to the immiscibility of the two metals, the structural properties of the resulting nanoparticles are not influenced by the change in the composition of bimetallic films [23]. That is, the structures of the final particles are the same after thermal annealing of Ni-Au bilayer with different compositions.

3.2 Morphological and structural characterization

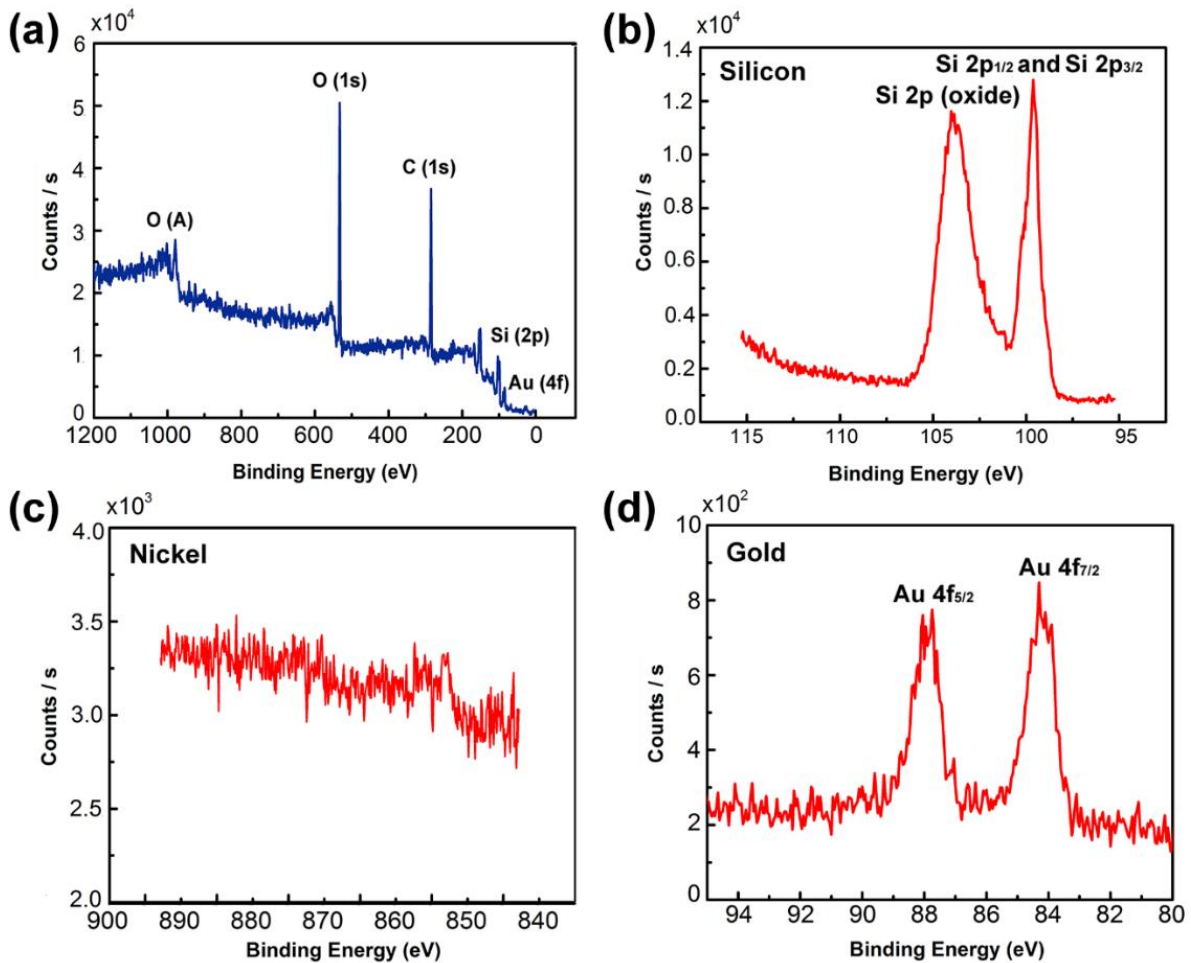


Figure 4: XPS spectrum of Ni₅₀@Au₅₀ NPA substrates. (a) XPS data acquired over a wide range of binding energies (0-1200 eV) from a Ni₅₀@Au₅₀ NPA substrate. (b) Detailed XPS data acquired for B.Es ranging from the silicon region of 95 to 115 eV. (c) Detailed XPS data acquired for B.Es ranging from the nickel region of 845 to 890 eV. (d) Detailed XPS data acquired for B.Es ranging from the gold region of 80 to 95 eV.

In situ XPS was employed to investigate the crystal phase of the Ni₅₀@Au₅₀ nanoparticles on the substrate, as shown in Figure 4. The XPS spectrum verified the existing of O, C, Si and Au elements in the substrate, as displayed in Figure 4(a). The detailed peaks of Si 2p_{1/2} and Si 2p_{3/2} at 99.4 eV, also the silicon dioxide at 103.5 eV verified the existing of silicon and silicon oxide in the substrate (Figure 4(b)) [32]. The detailed peaks of Ni 2p_{1/2} and Ni 2p_{3/2} at 869.9 eV and 852.6 eV were hardly detected in the XPS spectra corresponding to the Ni species (Figure 4(c)) [33]. The significant peaks of Au 4f_{5/2} and Au 4f_{7/2} at 87.7 eV and 84.0 eV, respectively were observed, which were in agreement with the standard peak positions in the stoichiometric Au (Figure 4(d)) [34]. It is assumed that the inherent surface sensitivity of XPS prevents the characteristic Ni signal from being observed for most of the particles, when the thickness of Au shell exceeds 10 nm. Only the surface composition of the Au was detected, indicating that Au atoms dominate the surface composition of the bimetallic Ni-Au nanoparticles. Therefore, the XPS spectra collected from Ni₅₀@Au₅₀ NPAs further demonstrate the core-shell architecture of nanoparticles.

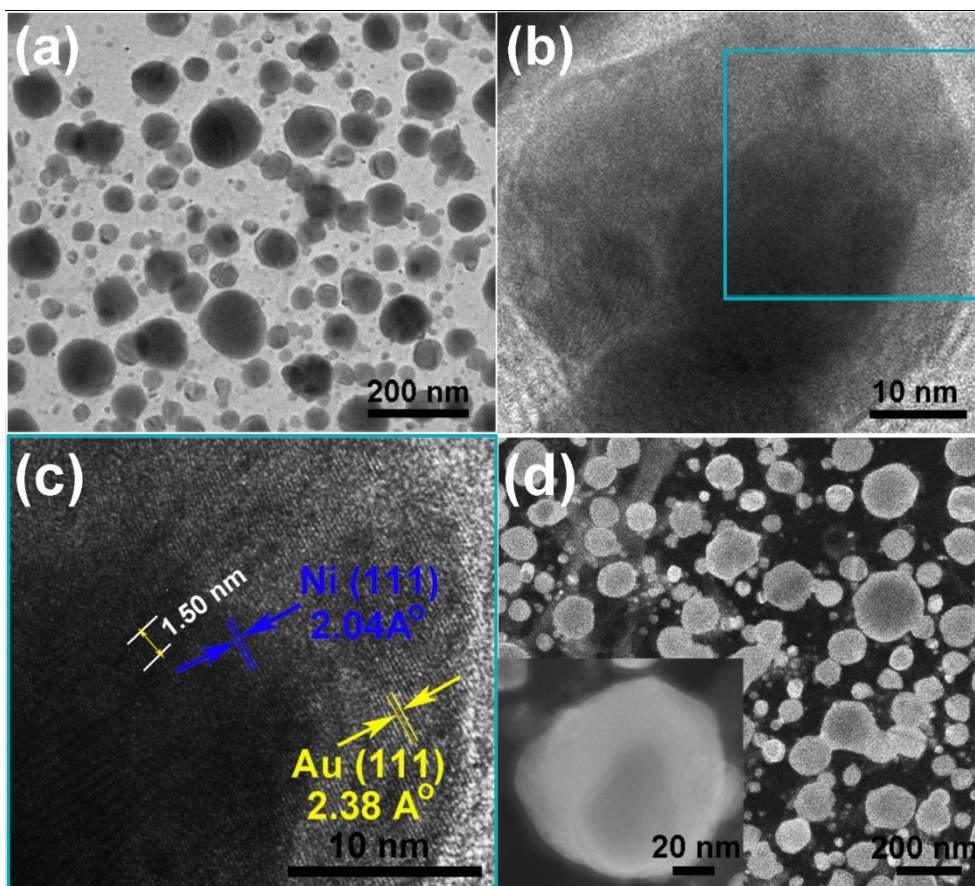


Figure 5: Structural characterization of the Ni₅₀@Au₅₀ nanoparticles. (a) The bright-field large-area TEM image of nanoparticles. (b-c) HRTEM images of an individual nanoparticle show the lattice fringes belonging to the core and shell component. (d) HAADF images of nanoparticles and single nanoparticle (inset).

In order to further confirm the core-shell structure of the as prepared Ni₅₀@Au₅₀ nanoparticles, TEM and HRTEM images were used for the structural and compositional characterization, as shown in Figures 5(a-c). All the TEM samples were fabricated by peeling off the NPAs from the substrate utilizing a poly (methyl methacrylate) (PMMA) and transferring the PMMA film directly to a Cu grid [35]. The as-annealed spherical nanoparticles shown in Figure 5(a) have a grain size distribution of 48 ± 42 nm and a short-distance of about 200 nm. The atomic mass of gold is heavier than nickel, so as expected, the Au shells will be darker and the Ni cores will be brighter in contrast. Therefore, the

difference in contrast between cores and shells is not obvious in the large-area TEM image. However, the HRTEM images of an individual nanoparticle shown in Figures 5(b-c) give further evidence of the core-shell structure, showing that the lattice spacing of 2.04\AA is consistent with fcc-nickel (111) planes in the core and 2.38\AA is consistent with fcc-gold (111) planes in the shell.

In addition, the appearance of moire pattern with an interval spacing of 1.50 nm was found in the core area due to the difference in the crystalline plane interval of gold shell and nickel core. HAADF imaging was carried out as a convincing method to confirm the core-shell structure. Figure 5(d) shows the HAADF images of as-prepared $\text{Ni}_{50}\text{@Au}_{50}$ nanoparticles. An apparent contrast between the dark core and bright edge components was revealed in the single nanoparticle image (inset), which indicated the different chemical compositions in the core and shell. Since the atomic number of Au is higher than Ni and it has a stronger ability to scatter electrons, it behaves brighter in the HAADF images [29]. Consequently, the core-shell structure of the Ni@Au nanoparticles is verified.

3.3 Magnetic properties

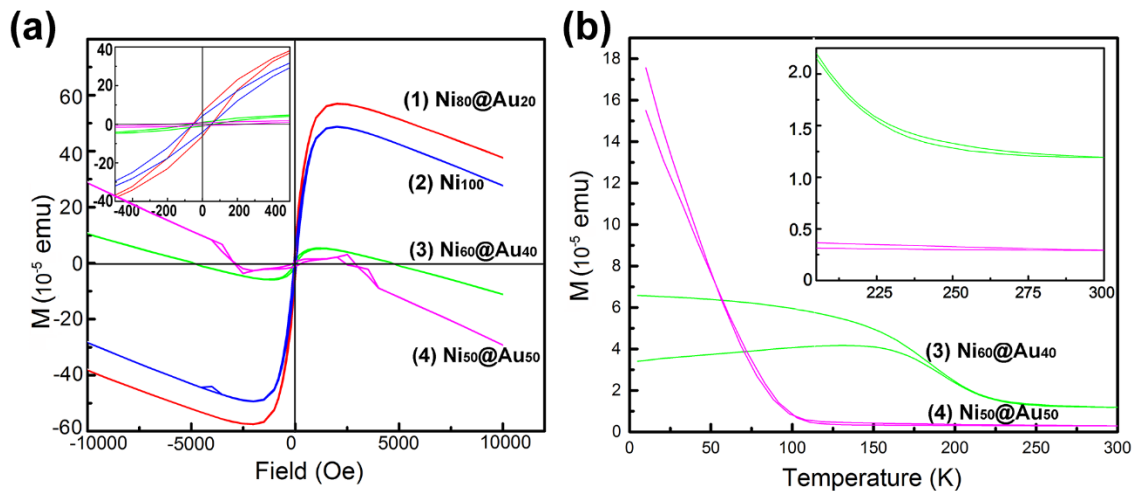


Figure 6: (a) Hysteresis loops of as-annealed Ni@Au core-shell NPs with different compositions and

Ni NPs. (b) FC-ZFC magnetization versus temperature curves for the Ni₆₀@Au₄₀ and Ni₅₀@Au₅₀ NPs.

The hysteresis loops (Figure 6(a)) show the magnetization curves of Ni@Au core-shell NPs and nickel-only NPs on the substrate of 4 cm² at 300 K. The Ni@Au core-shell NPs are designated as Ni₈₀@Au₂₀, Ni₆₀@Au₄₀, Ni₅₀@Au₅₀, Ni₄₀@Au₆₀ and Ni₂₀@Au₈₀ NPs, respectively. It is impossible to detect the magnetic property in the samples of the same area when the Ni composition less than 50%. A typical ferromagnetic behavior (inset) is shown for all measured nanoparticles. When the applied field reaches about 2500 Oe, the magnetic moment begins to saturate. The measured values of saturation magnetization (M_s) for Ni₅₀@Au₅₀ and Ni₆₀@Au₄₀ NPs are 2.0×10^{-5} and 6.0×10^{-5} emu, respectively. They are much lower than the value of nickel-only NPs. This is because of the smaller Ni core diameter and the contribution of a high composition of diamagnetic gold shells. The M_s is improved with the increasing Ni core diameter. However, the M_s of the Ni₈₀@Au₂₀ NPs was found to be higher than that of nickel-only NPs, which was a drastic enhancement in the magnetic moments. The enhanced magnetization in Ni₈₀@Au₂₀ NPs may come from the trapped metallic electrons at the Ni-Au interface [36, 37]. The chemical potential gradient generated at Ni-Au interface is able to trap the electrons from the gold atom and produce an orbital moment there. Still, a large interface is needed for the core-shell particles to produce interfacial effect [38]. For Ni₂₀@Au₈₀ and Ni₄₀@Au₆₀ NPs, the magnetization is undetected as a result of the small interface arising from the small Ni core in each nanoparticle.

Figure 6(b) shows the temperature-dependent zero-field cooling (ZFC) and field cooling (FC) magnetization curves for the substrates of Ni₅₀@Au₅₀ and Ni₆₀@Au₄₀ NPs, with an

applied field of 100 Oe. The blocking temperature (T_B) determined by the intersection of the ZFC and FC curves is higher than the room temperature for both Ni₅₀@Au₅₀ and Ni₆₀@Au₄₀ NPAs (inset). It evidently shows the ferromagnetism of the particles at room temperature, which is also consistent with the measured results in Figure 6(a). The magnetocrystalline anisotropy constant (K_u) was calculated by the following equation: $K_u=25k_B T_B/V$ [39], where k_B is the Boltzmann constant, and V is the volume of a Ni magnetic core. Since the value of K_u for fcc Ni@Au core-shell nanoparticles is constant. According to the equation, T_B of the Ni@Au core-shell nanoparticles should be proportional to the volume of Ni cores. This indicates that the value of T_B for the nanoparticles can be adjusted by changing the diameter of the Ni cores. As can be seen from the result, the T_B of the Ni₆₀@Au₄₀ NPAs was higher than that of Ni₅₀@Au₅₀ NPAs, which is due to the increasing Ni core diameter. And, the magnetization of Ni₆₀@Au₄₀ NPAs is less affected by temperature fluctuations than that of Ni₅₀@Au₅₀ NPAs, as indicated in Figure 6(b). Both interface magnetism and diamagnetism contribute to the total magnetization of Ni@Au core-shell NPAs. As we know, the diamagnetism is independent of temperature. The interfacial moment is very large at low temperatures, which will overcome the diamagnetic contribution, and make the NPAs with positive M_s . On the contrary, the interfacial magnetism is reduced and the diamagnetism is dominant at high temperatures, which make the NPAs with diamagnetic behavior. The negative moments for both Ni₆₀@Au₄₀ and Ni₅₀@Au₅₀ NPAs at 300K confirm the conclusion, as shown in Figure 6(a). Therefore, the magnetic properties of Ni@Au core-shell NPAs are adjustable with our fabrication method to suit for applications at different temperatures.

3.4 SERS properties

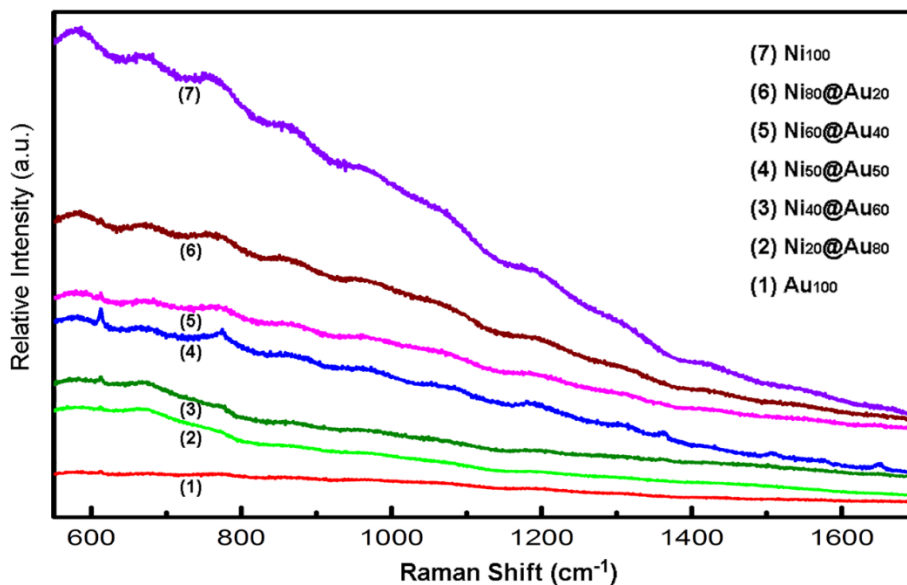


Figure 7: SERS spectra of the 10^{-6} M R6G molecule adsorbed on the substrates of NPAs with different Au compositions: Au₁₀₀ (1), Ni₂₀@Au₈₀ (2), Ni₄₀@Au₆₀ (3), Ni₅₀@Au₅₀ (4), Ni₆₀@Au₄₀ (5), Ni₈₀@Au₂₀ (6) and Ni₁₀₀ (7), respectively.

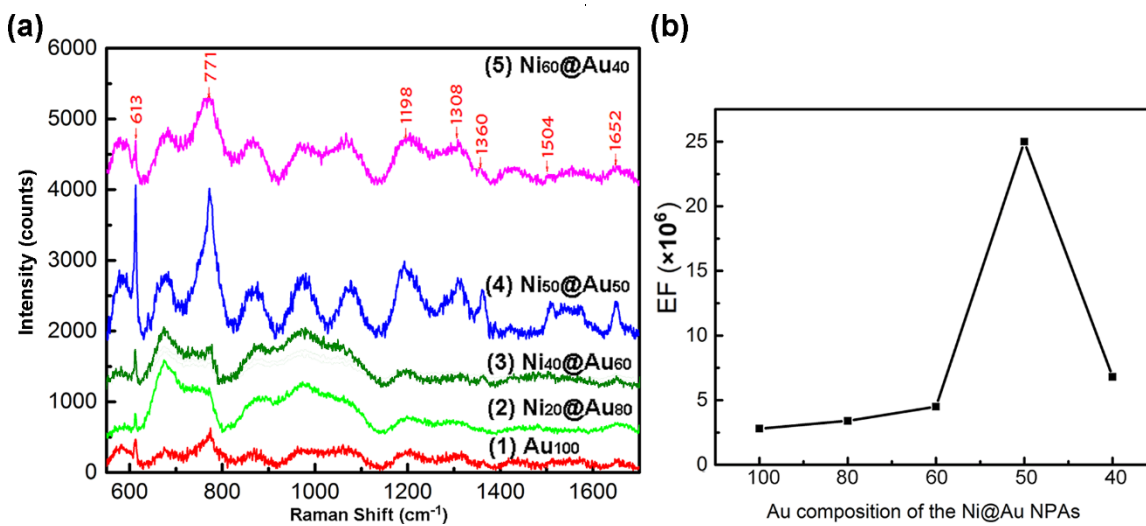


Figure 8: (a) SERS spectra of the 10^{-6} M R6G molecule adsorbed on the substrates of Au₁₀₀ (1), Ni₂₀@Au₈₀ (2), Ni₄₀@Au₆₀ (3), Ni₅₀@Au₅₀ (4) and Ni₆₀@Au₄₀ (5) NPAs, respectively. (b) The dependence of the EFs on the composition of Au shell at the 613 cm^{-1} peak for the 10^{-6} M R6G molecule absorption.

Seven types of samples including gold-only NPAs, Ni@Au core-shell NPAs and nickel-only NPAs formed on the identical substrates were used for SERS measurement. The as-annealed spherical nanoparticles have a same size distribution of 48 ± 42 nm and a short-distance of about 200 nm (Supporting information Fig. S3) for all samples. Figure 7 shows the Raman spectra of R6G molecules with a concentration of 10^{-6} M adsorbed on Au₁₀₀ (spectrum (1)), Ni₂₀@Au₈₀ (spectrum (2)), Ni₄₀@Au₆₀ (spectrum (3)), Ni₅₀@Au₅₀ (spectrum (4)), Ni₆₀@Au₄₀ (spectrum (5)), Ni₈₀@Au₂₀ (spectrum (6)) and Ni₁₀₀ (spectrum (7)) NPA substrates, respectively. As it can be seen, the typical peaks of R6G molecules are at 613 cm⁻¹, 771cm⁻¹, 1198 cm⁻¹, 1308 cm⁻¹, 1360 cm⁻¹, 1504 cm⁻¹, and 1652 cm⁻¹ corresponding to the C-C-C ring in-plane vibration mode, C-H out-of-plane bend mode, C-C stretching mode, aromatic C-C stretching mode, C-N stretching mode, aromatic C-C stretching mode and aromatic C-C stretching mode, respectively [40, 41]. Obviously, the Ni₅₀@Au₅₀ NPA substrate has the most significant Raman enhancement than other substrates. The spectrum of Ni₈₀@Au₂₀ NPA substrate shows the similar mode features and slight increase in the absorption bands, but weaker characteristic SERS peaks are generated. Finally, the nickel-only NPAs exhibit a stronger increase in the linewidth of the modes, but almost no obvious R6G vibration signals are observed.

The automatic baseline correction of software labspec5 was used for the data treatment of the Raman spectra (1-5) in Figure 7, as shown in Figure 8(a). The characteristic absorption band of 613 cm⁻¹ was considered for the Raman enhancement factor (EF) calculation. The EF was calculated by $EF = (I_{SERS}/I_{NR})(C_{NR}/C_{SERS})$, where I_{SERS} and I_{NR} are the intensity of SERS and normal Raman spectrum at the selected Raman peak of 613 cm⁻¹

¹, respectively [42]. C_{SERS} and C_{NR} are the concentrations used for SERS substrates and Si substrate, respectively. In this work, C_{SERS} is 10^{-6} and C_{NR} is 0.25 M with the I_{NR} of 225. The calculation results are shown in Tab. 1. And, Figure 8(b) shows the dependence of the EFs on the composition of Au shells in particles. With the further increase of the Ni composition from 20%, 40% to 50%, the SERS signal was enhanced remarkably. However, when the composition of Ni core reaches 60%, the SERS signal no longer continues to increase but decreases instead. The largest SERS enhancement at 613 cm^{-1} occurs when the volume proportion of the Ni is 50%, and the Raman intensity of the $\text{Ni}_{50}\text{@Au}_{50}$ NPAs was ~ 9 times higher compared to the gold-only NPAs. The EF was estimated to be 2.5×10^6 of SERS of normal Raman measurement under the 10^{-6} M R6G solution, indicating that the $\text{Ni}_{50}\text{@Au}_{50}$ NPA substrate has an excellent SERS performance. Accordingly, it can be seen that when the size, shape and spacing of the nanoparticles are the same, the Raman enhancement effect of the Ni@Au core-shell NPAs as the SERS substrate is mainly determined by the composition of the core-shell structure.

Tab. 1: EFs of SERS intensity at 613 cm^{-1} peaks of 10^{-6} M R6G molecule absorbed on the nickel-only NPA substrate, $\text{Ni}_{80}\text{@Au}_{20}$, $\text{Ni}_{60}\text{@Au}_{40}$, $\text{Ni}_{50}\text{@Au}_{50}$, $\text{Ni}_{40}\text{@Au}_{60}$, $\text{Ni}_{20}\text{@Au}_{80}$ NPA substrates and gold-only NPA substrate.

Sample	Probing molecule concentration	EF
nickel-only	10^{-6} M	/
$\text{Ni}_{80}\text{@Au}_{20}$	10^{-6} M	/
$\text{Ni}_{60}\text{@Au}_{40}$	10^{-6} M	6.8×10^5
$\text{Ni}_{50}\text{@Au}_{50}$	10^{-6} M	2.5×10^6
$\text{Ni}_{40}\text{@Au}_{60}$	10^{-6} M	4.5×10^5

Ni ₂₀ @Au ₈₀	10 ⁻⁶ M	3.4×10 ⁵
gold-only	10 ⁻⁶ M	2.8×10 ⁵

The SERS enhancement is mostly due to the intense electromagnetic coupling between the adjacent nanoparticles as well as the enhanced LSPR between the Ni cores and the surface polariton of Au shells in each nanoparticle [43]. As we know, the Ni@Au core-shell NPAs exhibit ferromagnetic behavior due to an interfacial effect. It is speculated that the enhanced local electromagnetic field is generated at the Ni-Au interface, and magnified at the Au shell, which cannot be achieved in the gold-only nanoparticles. The ferromagnetism of the Ni@Au nanoparticles can affect the surface electrons and thus affect the plasma mode distribution of R6G molecules. Thus, the SERS enhancement effect of the R6G molecules is achieved, but shows a different vibrational mode than the gold-only nanoparticles, as shown in Figure 7. For Ni₂₀@Au₈₀ and Ni₄₀@Au₆₀ NPAs, the SERS intensity is almost in the same level of gold-only NPAs due to the thick Au shell in each nanoparticle. However, as the proportion of Ni increases, the modes are significantly broadened, which is attributed to enhanced coupling from the surface modes into the adjacent absorptive Ni nanoparticles. Because the localized plasmon mode is highly sensitive to the composition of the precise material at the nanoparticle surface [44]. Not all localized plasmons generate SERS signals with equal efficiency. For Ni₈₀@Au₂₀ NPAs, although the nanoparticle has a thin gold shell, the plasmonic electric field can penetrate into the adjacent Ni nanoparticles, thereby increasing absorption and reducing SERS. For nickel-only NPAs, there is only strong plasmon resonance but no Raman enhancement signal. Thus, the sample of Ni₅₀@Au₅₀ is the optimum thickness of the Au shell for the Ni@Au core-shell nanoparticles which shows maximum SERS, beyond which, the

diamagnetism of Au electrons will dominate and decrease the plasmons from the interfacial ferromagnetic behavior. As a result, the magnetic–plasmonic Ni@Au core-shell NPA demonstrates a promising SERS substrate with high stability and good magnetic capabilities, which is suitable for biological and chemical molecule detection at low concentrations.

4. Conclusion

In summary, the fabrication of large-area, cost-effective NPA substrates with tunable composition of Ni@Au core-shell nanostructures was presented in the paper. The magnetic properties and SERS active performance of the Ni@Au core-shell NPAs were investigated. The M_s of the prepared Ni₈₀@Au₂₀ nanoparticles was found to be enhanced due to the interfacial effect of the core-shell structure. The SERS result shows that the Ni₅₀@Au₅₀ NPA substrate has the strongest SERS enhancement of approximate 9 times of that of gold-only NPA substrate with the same size, shape and spacing. It reveals that there is an optimum size of the Au shell for the Ni@Au core–shell nanoparticle which shows the maximum plasmons generated by the interfacial ferromagnetic behavior. Better Raman enhancement achieved with less Au material confirms the cost-effectiveness of this method. In addition, the properties of NPAs can be tailored by controlling the pattern, size and composition of the core-shell nanoparticles to create nanostructured films with specific properties, providing new avenues for biosensing and chemical applications.

■ ASSOCIATED CONTENT

Supporting Information

A low magnification SEM image of the Ni₅₀@Au₅₀ NPAs, EDS mapping scans of single

crystallized Ni₅₀@Au₅₀ nanoparticle, and Plots of the grainsize distribution of the as-annealed Ni@Au core-shell particles. (TIFF)

■ AUTHOR INFORMATION

Corresponding Author

Zuobin Wang: phone: +86 431 85582926, fax: +86 431 85582925, e-mail address:

wangz@cust.edu.cn

Zhongliang Qiao: phone: +86 898 65861468, fax: +86 898-65861468, e-mail address:

qzhl2007@hotmail.com

Li Li: phone: phone: +86 431 85582926, fax: +86 431 85582925, e-mail address:

lil@cust.edu.cn

■ ACKNOWLEDGMENTS

This work was supported by National Key R&D Program of China (No. 2016YFE0112100), EU H2020 Program (FabSurfWAR No.644971; NanoStencil No.767285), National Natural Science Foundation Program of China (Nos.11504030, 61964007, 61864002), Jilin Provincial Science and Technology Program (Nos.20160623002TC, 20180414002GH, 20180414081GH, 20180520203JH and 20190702002GH), “Natural Science Foundation of Hainan Province” Project (No. 2018CXTD336) and “111” Project of China (D17017).

■ CONFLICT OF INTEREST

The authors declare that they have no conflict of interest.

■ REFERENCES

1. Ali, M. R. K.; Ibrahim, I. M.; Ali, H. R.; Selim, S. A.; El-Sayed, M. A. *International Journal of Nanomedicine* **2016**, *11*, 4849-4863.
2. Dreaden, E. C.; Alkilany, A. M.; Huang, X.; Murphy, C. J.; El-Sayed, M. A. *Chemical Society Reviews* **2012**, *41* (7), 2740-2779, 10.1039/C1CS15237H.
3. Carsten, S. N.; Reinhard, B. R. M.; Jan, L.; A Paul, A. *Nature Biotechnology* **2005**, *23* (6), 741-745.
4. Wu, Y.; Ali, M. R. K.; Chen, K.; Fang, N.; El-Sayed, M. A. *Nano Today* **2019**, *24*, 120-140.
5. Murphy, C. J.; Gole, A. M.; Hunyadi, S. E.; Stone, J. W.; Sisco, P. N.; Alkilany, A.; Kinard, B. E.; Hankins, P. *Chemical communications (Cambridge, England)* **2008**, (5), 544-57.
6. Oara, N.; Urban, A. S.; Jared, D.; Surbhi, L.; Peter, N.; Halas, N. J. *Acs Nano* **2013**, *7* (1), 42-49.
7. Mark, T.; Golovko, V. B.; Vaughan, O. P. H.; Pavel, A.; Angel, B. M.; Tikhov, M. S.; Johnson, B. F. G.; Lambert, R. M. *Nature* **2008**, *454* (7207), 981-983.
8. Freeman, R. G.; Grabar, K. C.; Allison, K. J.; Bright, R. M.; Davis, J. A.; Guthrie, A. P.; Hommer, M. B.; Jackson, M. A.; Smith, P. C.; Walter, D. G. *Science* **1995**, *267* (5204), 1629-1632.
9. Zhening, Z.; Haifeng, M.; Wenjing, L.; Xinfeng, L.; Jianxiao, G.; Xiaohui, Q.; Lei, J.; Dan, W.; Zhiyong, T. *Angewandte Chemie* **2011**, *50* (7), 1593-1596.
10. Yan, B.; Boriskina, S. V.; Reinhard, B. M. *J Phys Chem C Nanomater Interfaces* **2011**, *115* (50), 24437-24453.

11. Huigao, D.; Hailong, H.; Karthik, K.; Zexiang, S.; Yang, J. K. W. *Acs Nano* **2011**, *5* (9), 7593-600.
12. Yukie, Y.; Kosei, U.; Hiroaki, M. *Chemical Communications* **2011**, *47* (12), 3505-3507.
13. Liberman, V.; Yilmaz, C.; Bloomstein, T. M.; Somu, S.; Echegoyen, Y.; Busnaina, A.; Cann, S. G.; Krohn, K. E.; Marchant, M. F.; Rothschild, M. *Advanced materials (Deerfield Beach, Fla.)* **2010**, *22* (38), 4298-302.
14. Klein, M. W.; Christian, E.; Martin, W.; Stefan, L. *Science* **2006**, *313* (5786), 502-504.
15. Joel, H.; Hyung, L. M.; Odom, T. W. *Nature Nanotechnology* **2007**, *2* (9), 549.
16. TEMNOV; Vasily, V.; ARMELLES; Gaspar; WOGGON; Ulrike; GUZATOV; Dmitry; CEBOLLADA; Alfonso. *Nature Photonics* **2010**, *4* (4), 107.
17. Levin, C. S.; Cristina, H.; Ali, T. A.; Kelly, A. T.; Emilia, M.; Peter, N.; Whitmire, K. H.; Halas, N. J. *Acs Nano* **2009**, *3* (6), 1379-88.
18. Thuy, Trinh, T.; Higashimine; Koichi; Mott; Derrick, M.; Maenosono; Shinya; Trang. *Plasmonics* **2013**, *8* (2), 1177-1184.
19. Nykypanchuk, D.; Maye, M. M.; Lelie, D. V. D.; Gang, O. *Nature* **2008**, *451* (7178), 549-552.
20. Gaudry, M.; Cottancin, E.; Pellarin, M.; Lermé, J.; Arnaud, L.; Huntzinger, J. R.; Vialle, J. L.; Broyer, M.; Rousset, J. L.; Treilleux, M. *Physical Review B* **2003**, *67* (15), 286-293.
21. Major, K. J.; De, C.; Obare, S. O. *Plasmonics* **2009**, *4* (1), 61-78.
22. Toshima, N.; Yonezawa, T. *New Journal of Chemistry* **1998**, *22* (11), 1179-1201,

10.1039/A805753B.

23. Nikov, R. G.; Nedyalkov, N. N.; Atanasov, P. A.; Grochowska, K.; Iwulska, A.; Sliwinski, G. *Laser nanostructuring of Au/Ag and Au/Ni films for application in SERS*; SPIE: 2013; Vol. 8770.
24. Ding, Q.; Zhou, H.; Zhang, H.; Zhang, Y.; Wang, G.; Zhao, H. *Journal of Materials Chemistry A* **2016**, *4* (22), 8866-8874.
25. Fu, Q.; Wong, K. M.; Yi, Z.; Wu, M.; Yong, L. *Rsc Advances* **2014**, *5* (8), 6172-6180.
26. Wang, L.; Dong, L.; Li, L.; Ding, R.; Liu, J.; Zhang, W.; Wang, Y.; Weng, Z.; Guo, X.; Wang, Z. *Journal of Magnetism and Magnetic Materials* **2019**, 165876.
27. Reichert, H.; Schöps, A.; Ramsteiner, I. B.; Bugaev, V. N.; Shchyglo, O.; Udyansky, A.; Dosch, H.; Asta, M.; Drautz, R.; Honkimäki, V. *Physical Review Letters* **2005**, *95* (23), 235703.
28. Wang, D.; Schaaf, P. *Materials Letters* **2012**, *70*, 30-33.
29. She, H.; Chen, Y.; Chen, X.; Zhang, K.; Wang, Z.; Peng, D.-L. *Journal of Materials Chemistry* **2012**, *22* (6), 2757-2765.
30. Ruffino, F.; Romano, L.; Pitruzzello, G.; Grimaldi, M. G. *Applied Physics Letters* **2012**, *100* (5), 341.
31. Sui, M.; Li, M. Y.; Kim, E. S.; Lee, J. *Nanoscale Research Letters* **2013**, *8* (1), 525-525.
32. Jensen, D. S.; Kanyal, S. S.; Madaan, N.; Vail, M. A.; Dadson, A. E.; Engelhard, M. H.; Linford, M. R. *Surface Science Spectra* **2013**, *20* (1), 36-42.
33. A. Bharathan, V.; Jain, R.; Gopinath, C. S.; Vinod, C. P. *Catalysis Science &*

- Technology* **2017**, 7 (19), 4489-4498, 10.1039/C7CY01070B.
34. Bharathan, V. A.; Raj, G. K.; Joy, P. A.; Vinod, C. P. *Particle & Particle Systems Characterization* **2014**, 31 (2), 236-244.
 35. Jiao, L.; Fan, B.; Xian, X.; Wu, Z.; Zhang, J.; Liu, Z. *Journal of the American Chemical Society* **2008**, 130 (38), 12612-3.
 36. AMARJARGAL; Altangerel; TIJING; Leonard, D.; IkTae; Kim, C. S. *Chemical Engineering Journal* **2013**, 226 (Complete), 243-254.
 37. Khan, G.; Sarkar, D.; Singh, A.; Mandal, K. *Rsc Advances* **2013**, 3 (6), 1722-1727.
 38. Banerjee, S.; Raja, S. O.; Sardar, M.; Gayathri, N.; Ghosh, B.; Dasgupta, A. *Journal of Applied Physics* **2011**, 109 (12), 013001-2507.
 39. Cullity, B. D.; Graham, C. D. *Introduction to Magnetic Materials*; 1972.
 40. Rout, C. S.; Kumar, A.; Fisher, T. S. *Nanotechnology* **2011**, 22 (39), 395704.
 41. Dridi, H.; Moadhen, A.; Haji, L. *Journal of Porous Materials* **2015**, 22 (1), 239-245.
 42. Kumar, G. V. P.; Shruthi, S.; Vibha, B.; Reddy, B. A. A.; Kundu, T. K.; Narayana, C. *Journal of Physical Chemistry C* **2007**, 111 (11), 4388-4392.
 43. Mahajan, S.; Cole, R. M.; Soares, B. F.; Pelfrey, S. H.; Russell, A. E.; Baumberg, J. J.; Bartlett, P. N. *Journal of Physical Chemistry C* **2009**, 113 (21), 9284-9289.
 44. Cole, R. M.; Sumeet, M.; Bartlett, P. N.; Baumberg, J. J. *Optics Express* **2009**, 17 (16), 13298.

Table of Contents graphic

