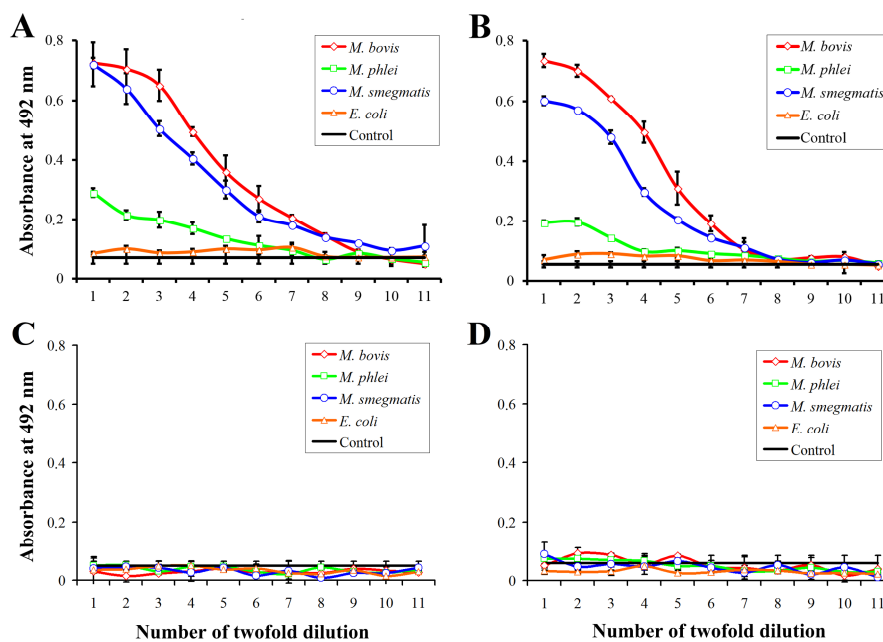


1

Supplementary information



2

3

4 **Figure S1.** Results of ELISA of *M. bovis*, *M. phlei*, *M. smegmatis* and *E. coli* cell
 5 suspensions (10^8 cells mL^{-1}) with antisera against Ara₆C₂NH₂-GNPs **3** (A), Ara₆C₂EG₇NH₂-
 6 GNPs **4** (B), intact serum of the rabbit used for immunization (C) and antibodies against
 7 LPS of *Azospirillum brasilense* Sp7 generated in the presence of CFA (D). Error bars
 8 indicate the observed confidence intervals at $p < 0.05$.

9