

Supporting Information
Total synthesis of 2'-O-methyl- β -L-
arabinosyluridine and reassignment the
nucleoside from *Penicillium sp.* as 2'-O-methyl-
 β -L-uridine

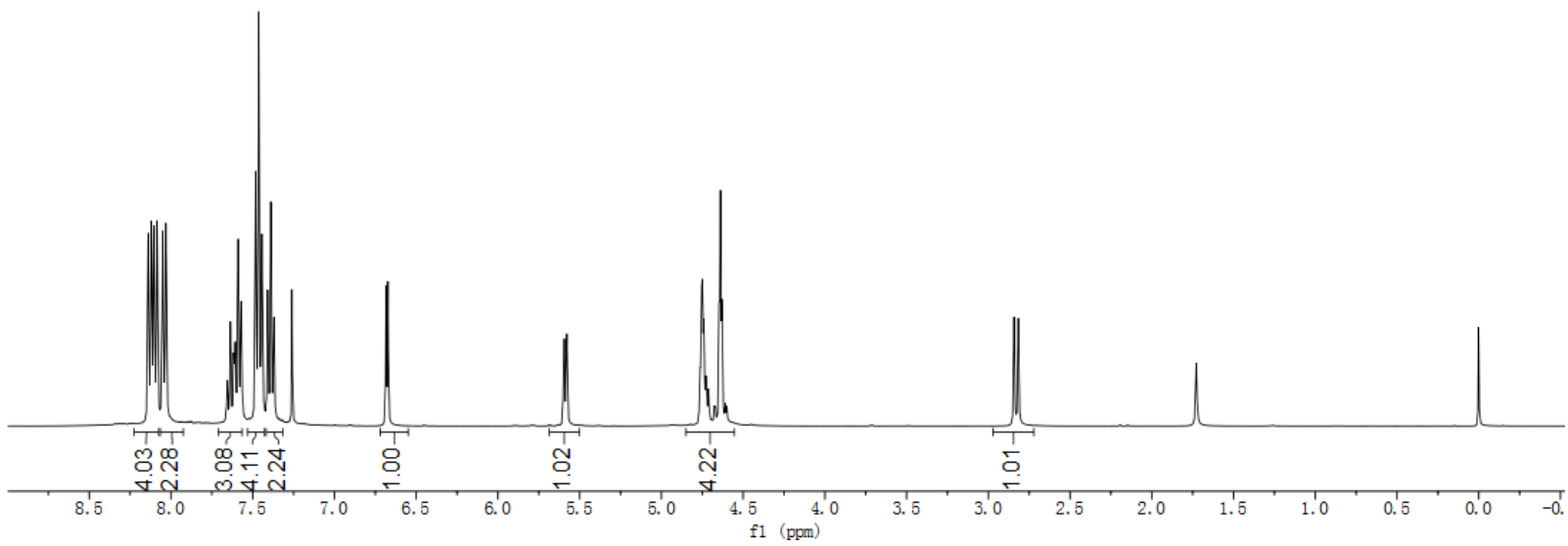
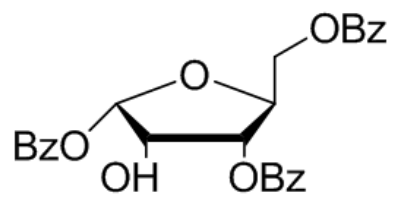
Chunyang Shen¹, Haixin Ding¹, Xueping Tao¹, Jiang Bai¹, Ban-Peng Cao*¹,
Yi-Yuan Peng² and Qiang Xiao*¹

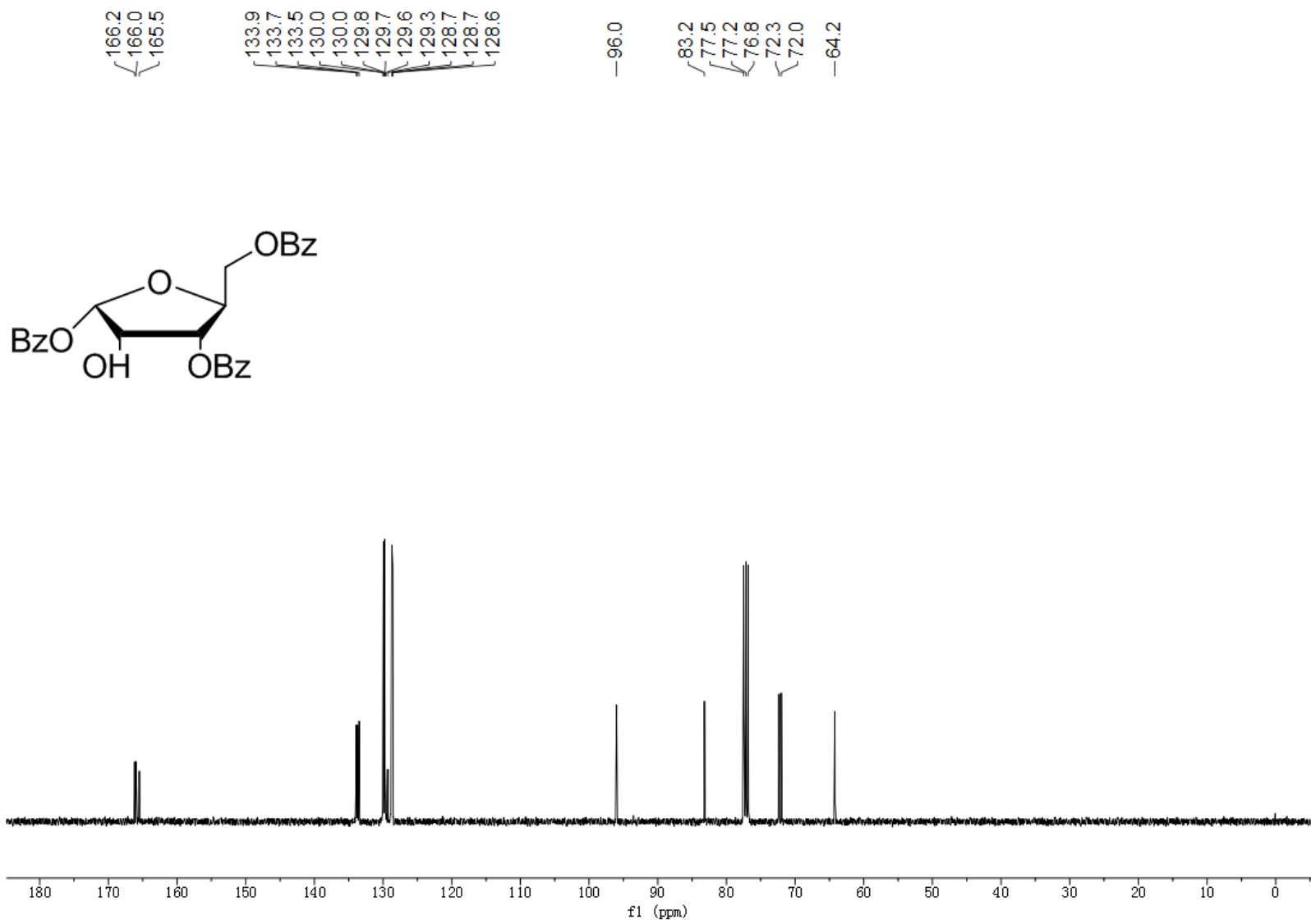
¹Jiangxi Key Laboratory of Organic Chemistry, Jiangxi Science & Technology Normal University, 605 Fenglin Road, Nanchang, Jiangxi province, PR China 330013 and ²Key Laboratory of Small Functional Organic Molecule, Ministry of Education, Jiangxi's Key Laboratory of Green Chemistry and College of Chemistry & Chemical Engineering, Jiangxi Normal University Nanchang, Jiangxi 330022

1. NMR Spectra.
2. Table S1 Crystal data and structure refinement for **6**.
3. Table S2 Crystal data and structure refinement for **12**.

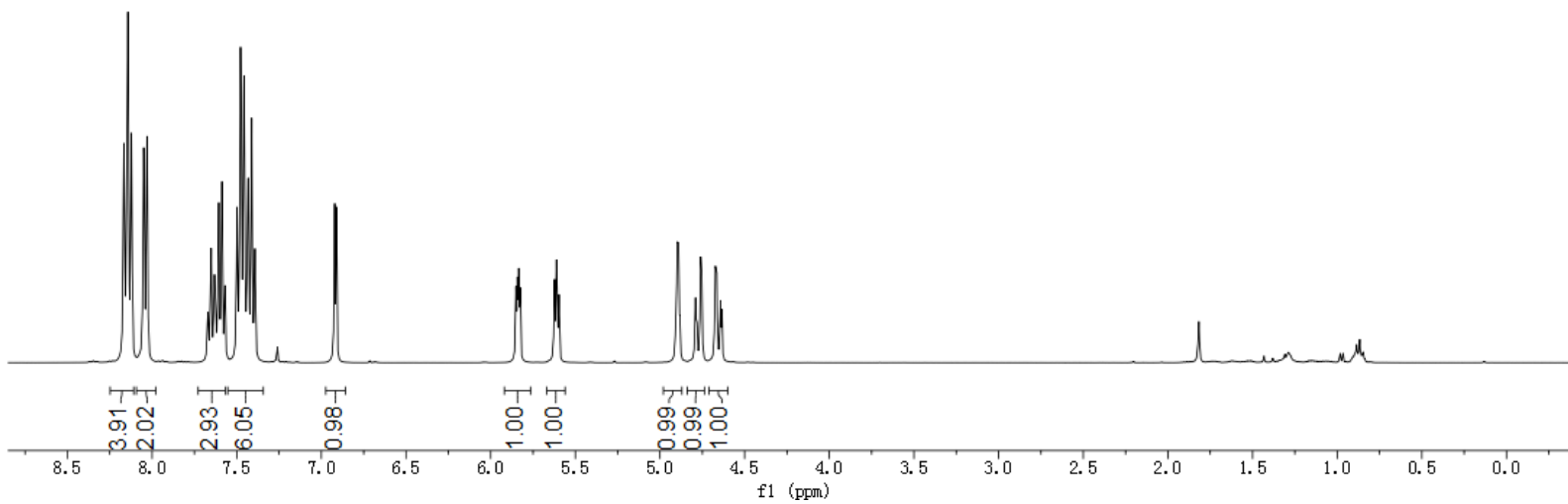
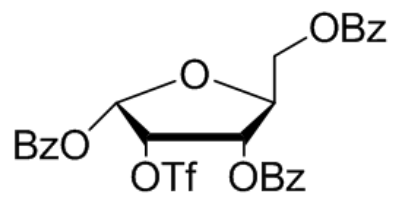
8.14
8.12
8.10
8.09
8.05
8.03
7.66
7.64
7.62
7.61
7.59
7.57
7.48
7.46
7.44
7.41
7.39
7.37
7.26
6.68
6.67
5.59
5.58
4.76
4.75
4.75
4.74
4.73
4.71
4.65
4.64
4.63

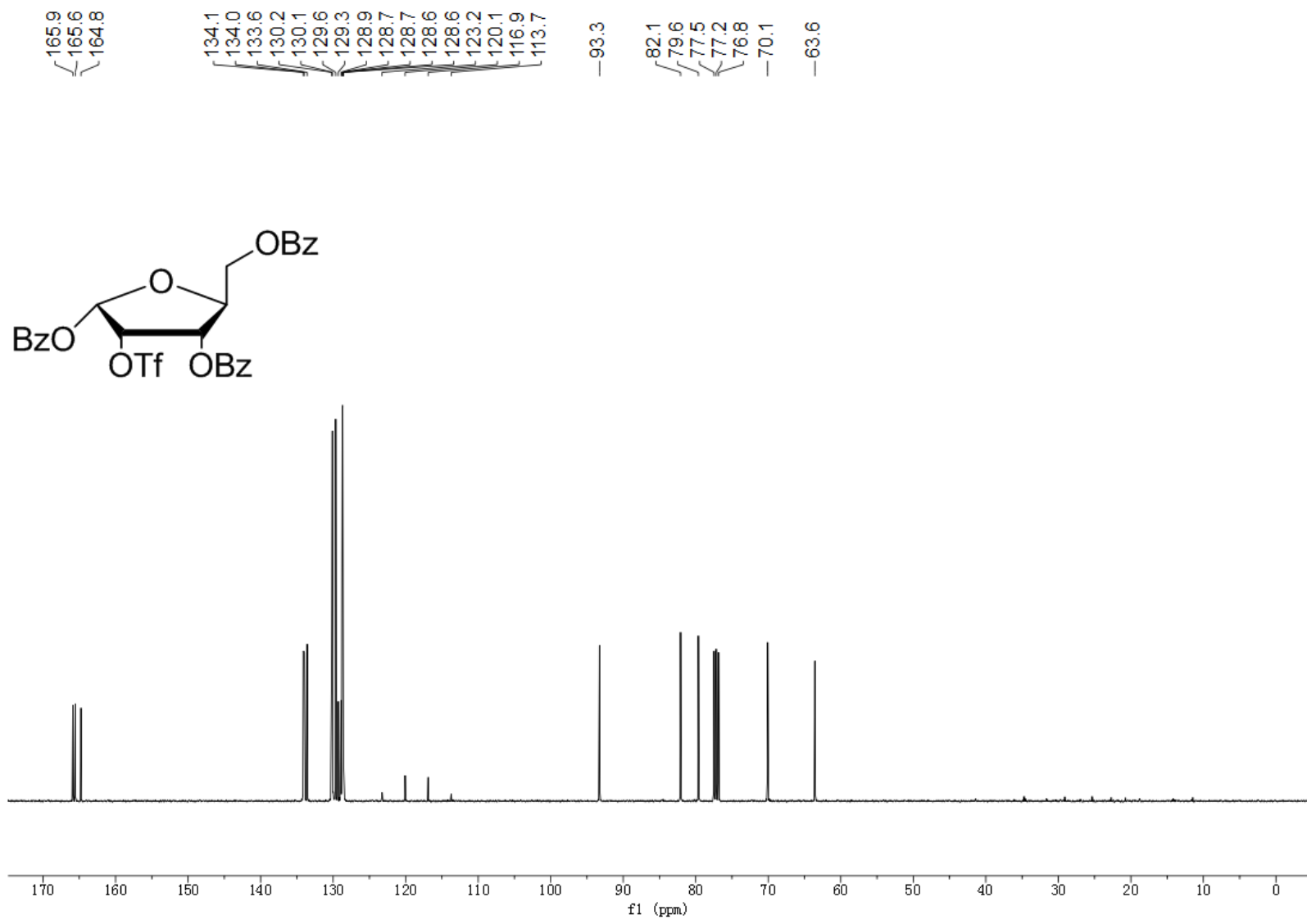
2.84
2.82



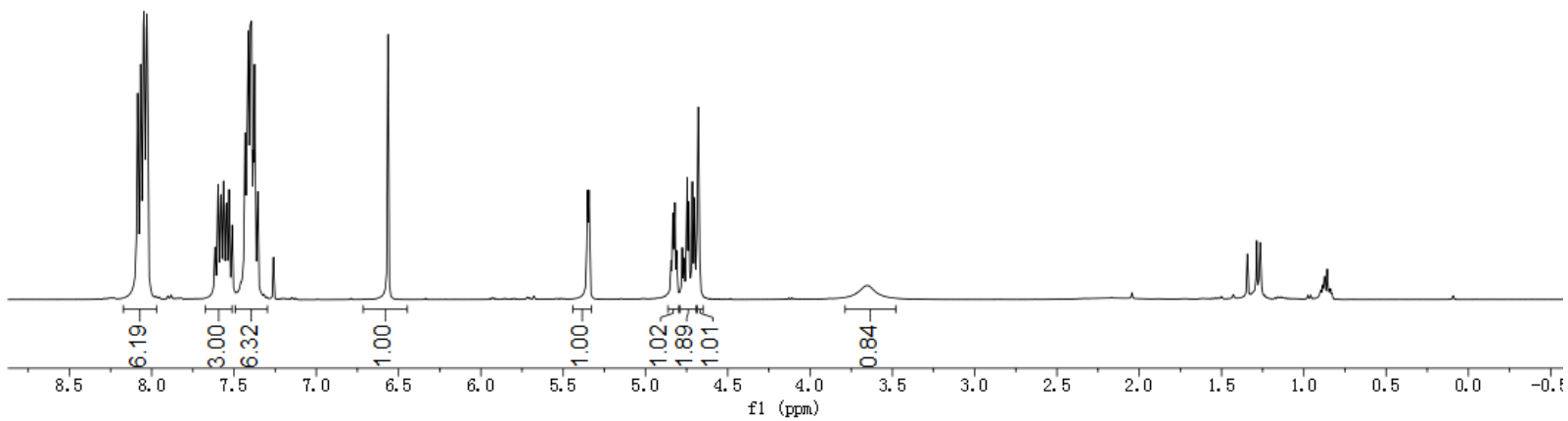
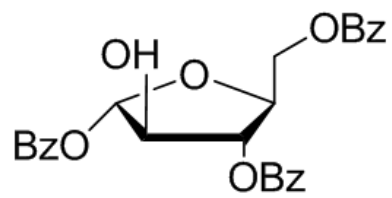


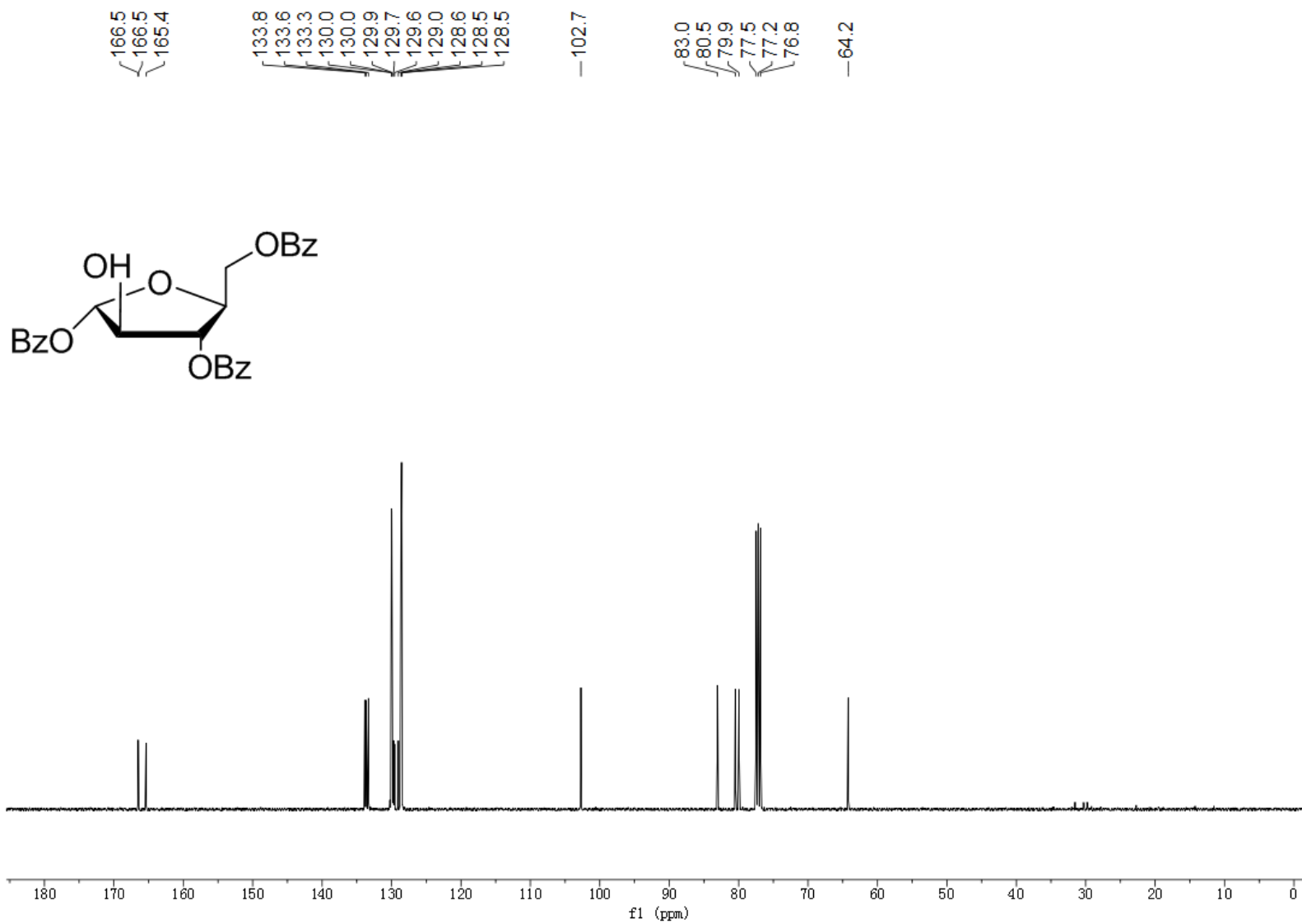
8.17
8.14
8.12
8.05
8.03
7.67
7.65
7.63
7.61
7.59
7.57
7.50
7.48
7.46
7.43
7.43
7.41
7.39
7.26
6.92
6.91
5.85
5.84
5.83
5.83
5.62
5.61
5.60
4.90
4.89
4.88
4.79
4.78
4.76
4.75
4.67
4.66
4.64
4.63

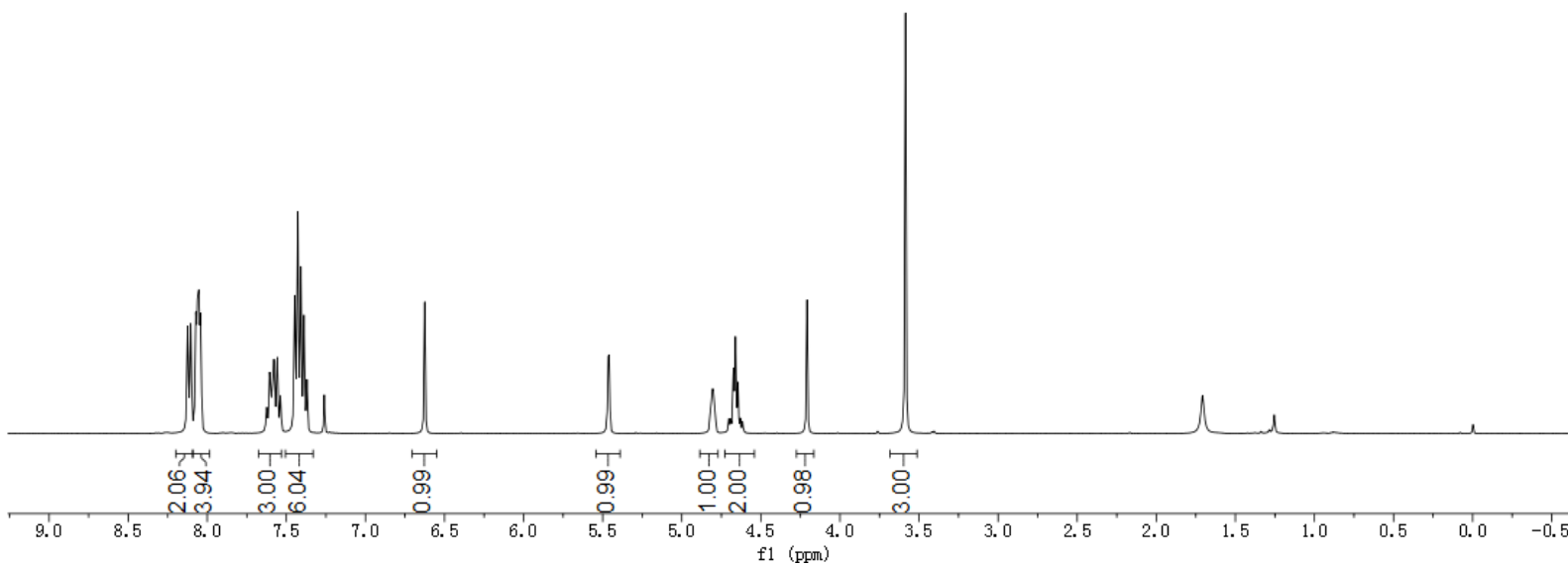
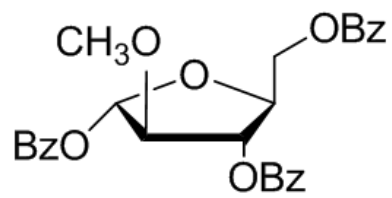


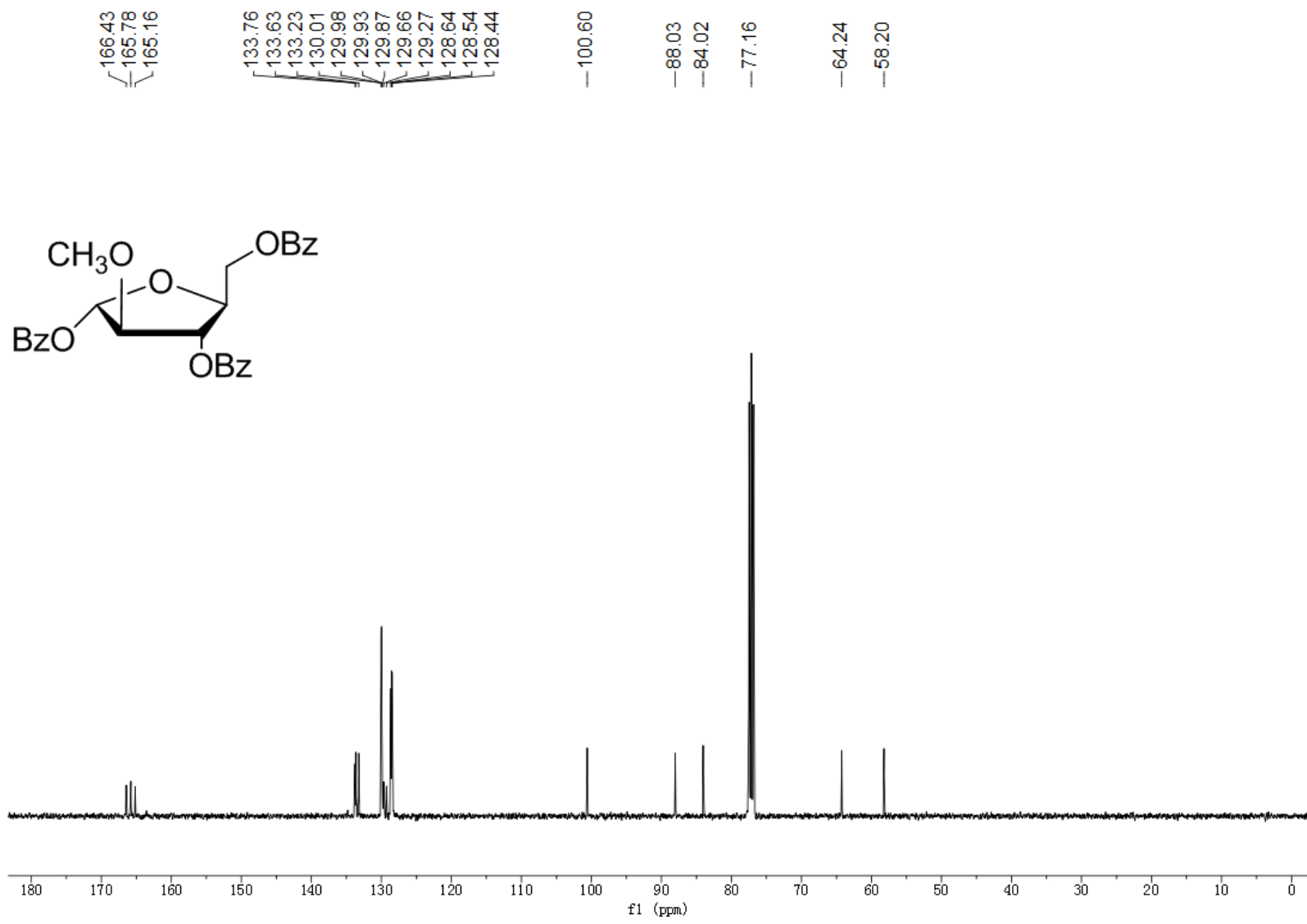


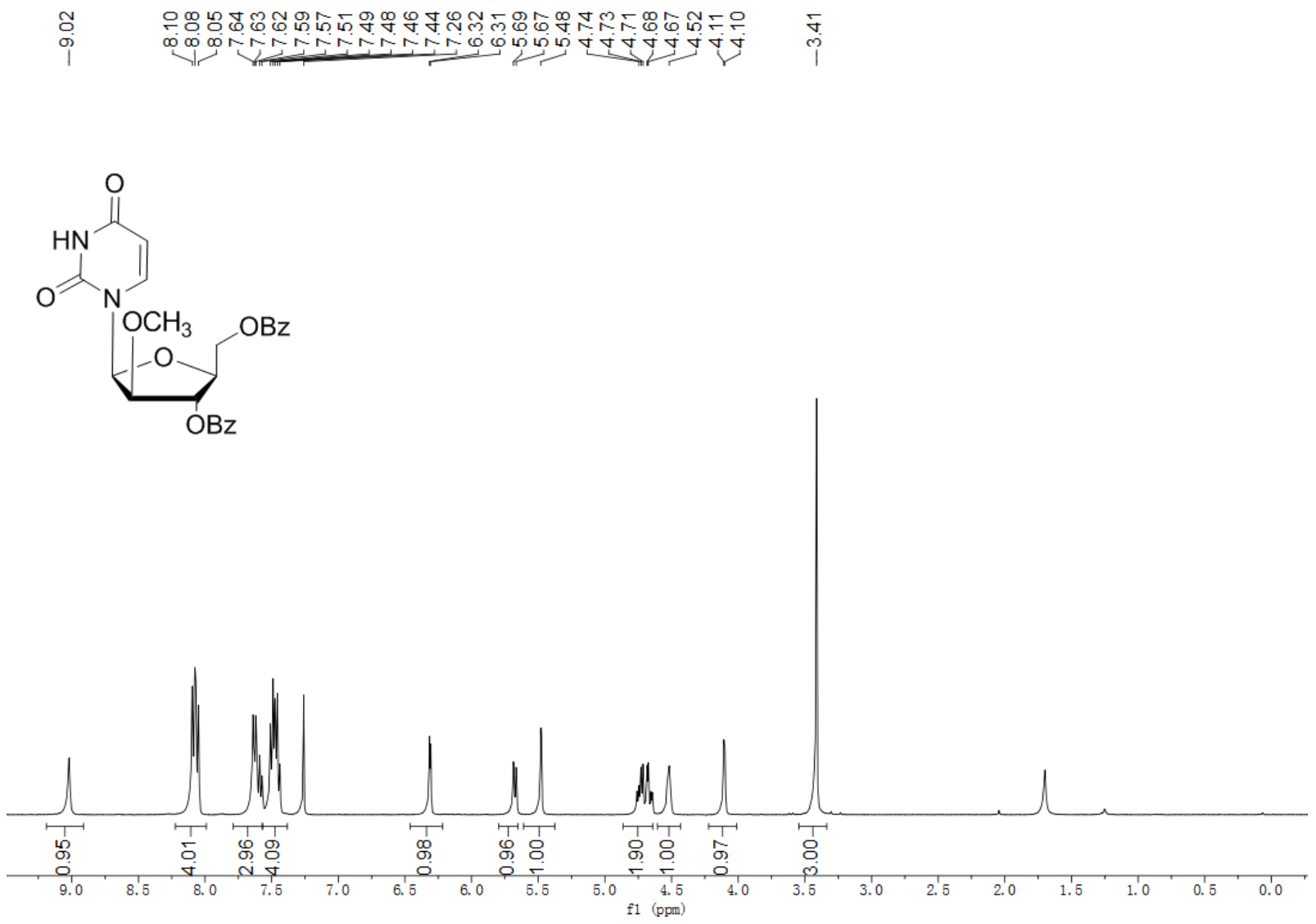
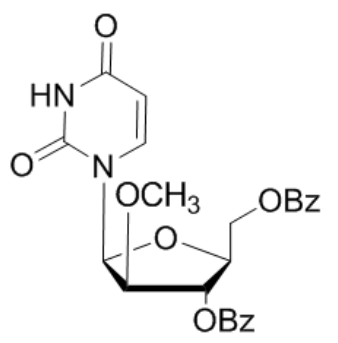
8.09
8.07
8.05
8.03
8.03
7.60
7.58
7.58
7.56
7.55
7.54
7.53
7.51
7.43
7.42
7.41
7.40
7.39
7.38
7.37
7.35
7.26
6.56
5.35
5.34
4.84
4.83
4.82
4.81
4.78
4.77
4.75
4.74
4.72
4.70
4.68
3.65









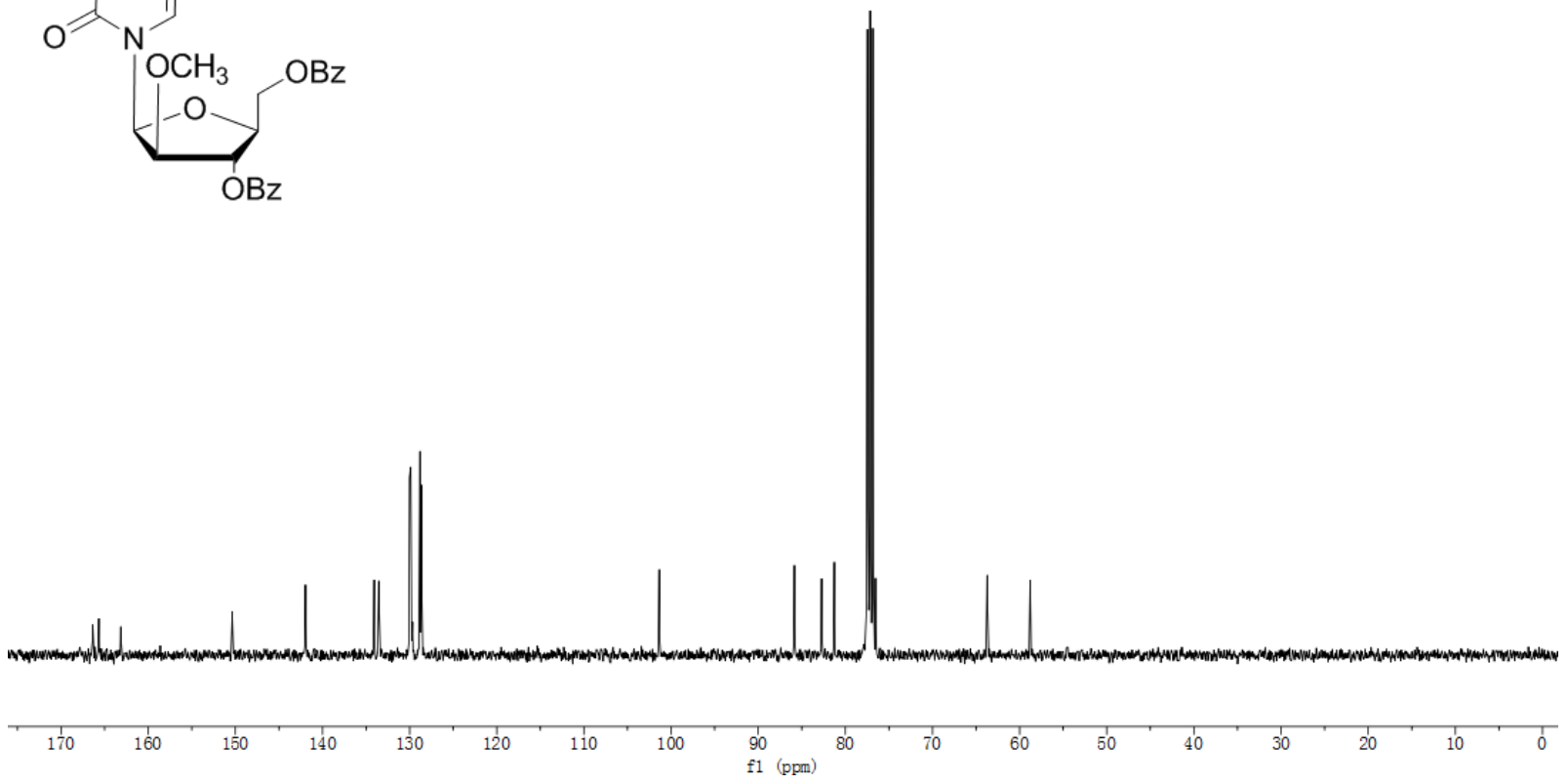
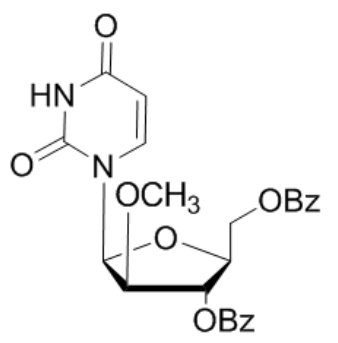


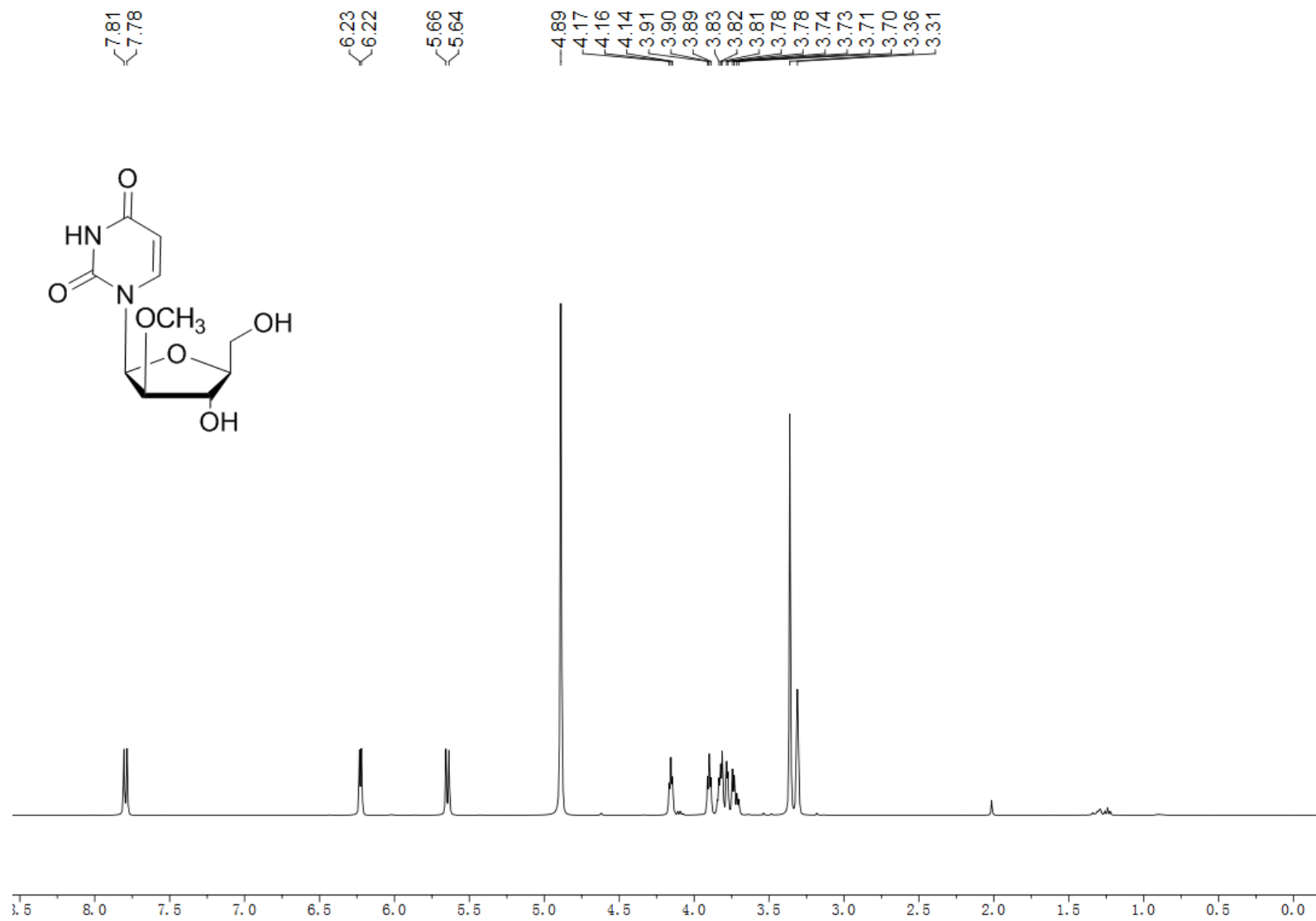
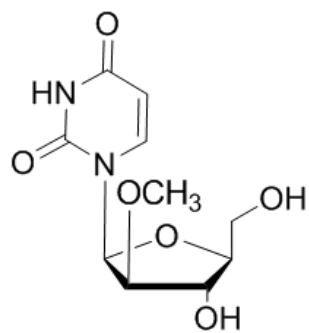
166.4
165.7
163.2
— 150.4
— 142.0
134.1
133.5
130.0
129.9
129.7
128.8
128.6

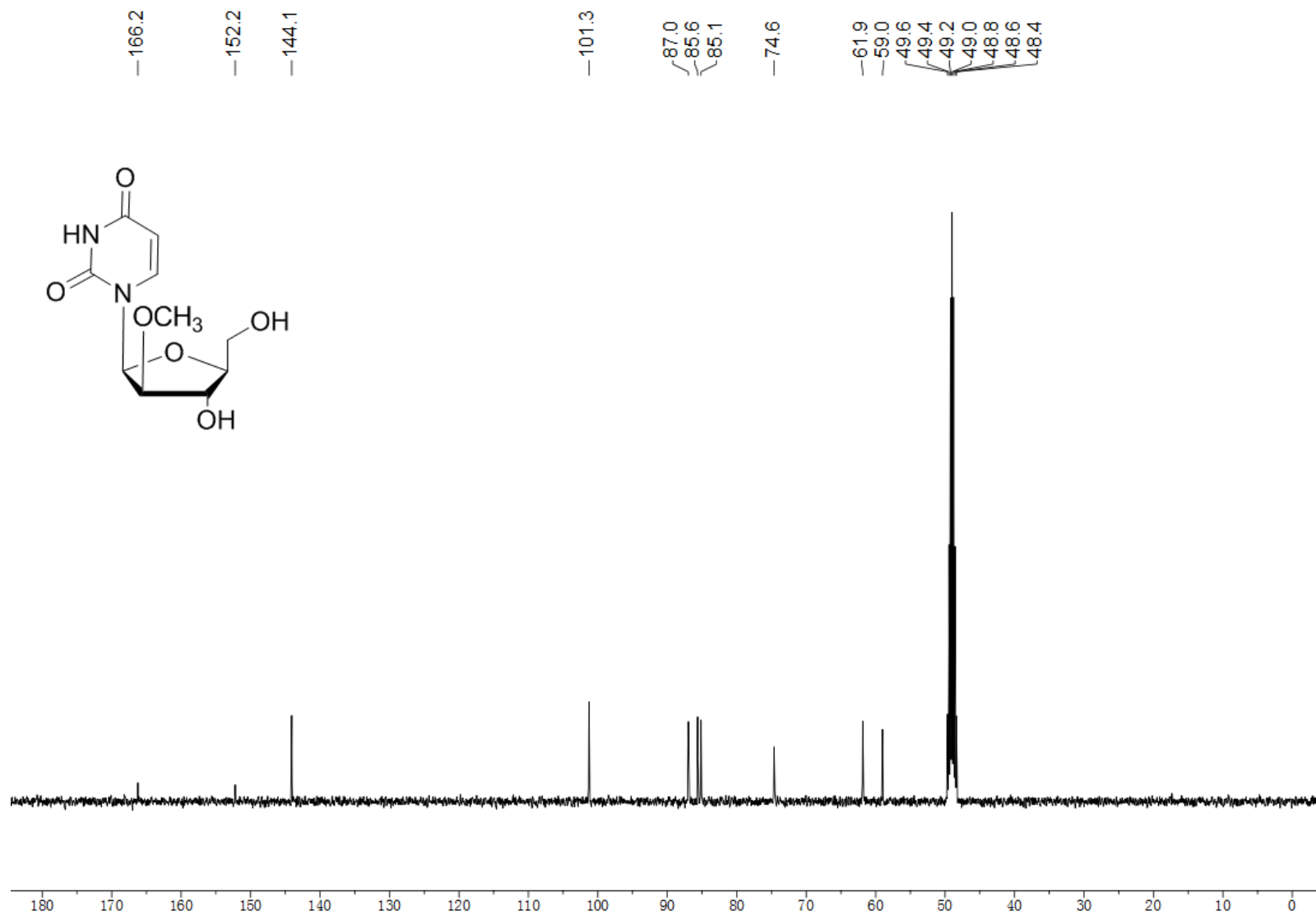
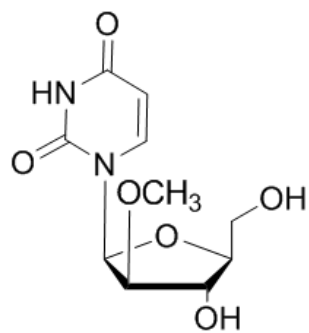
— 101.4

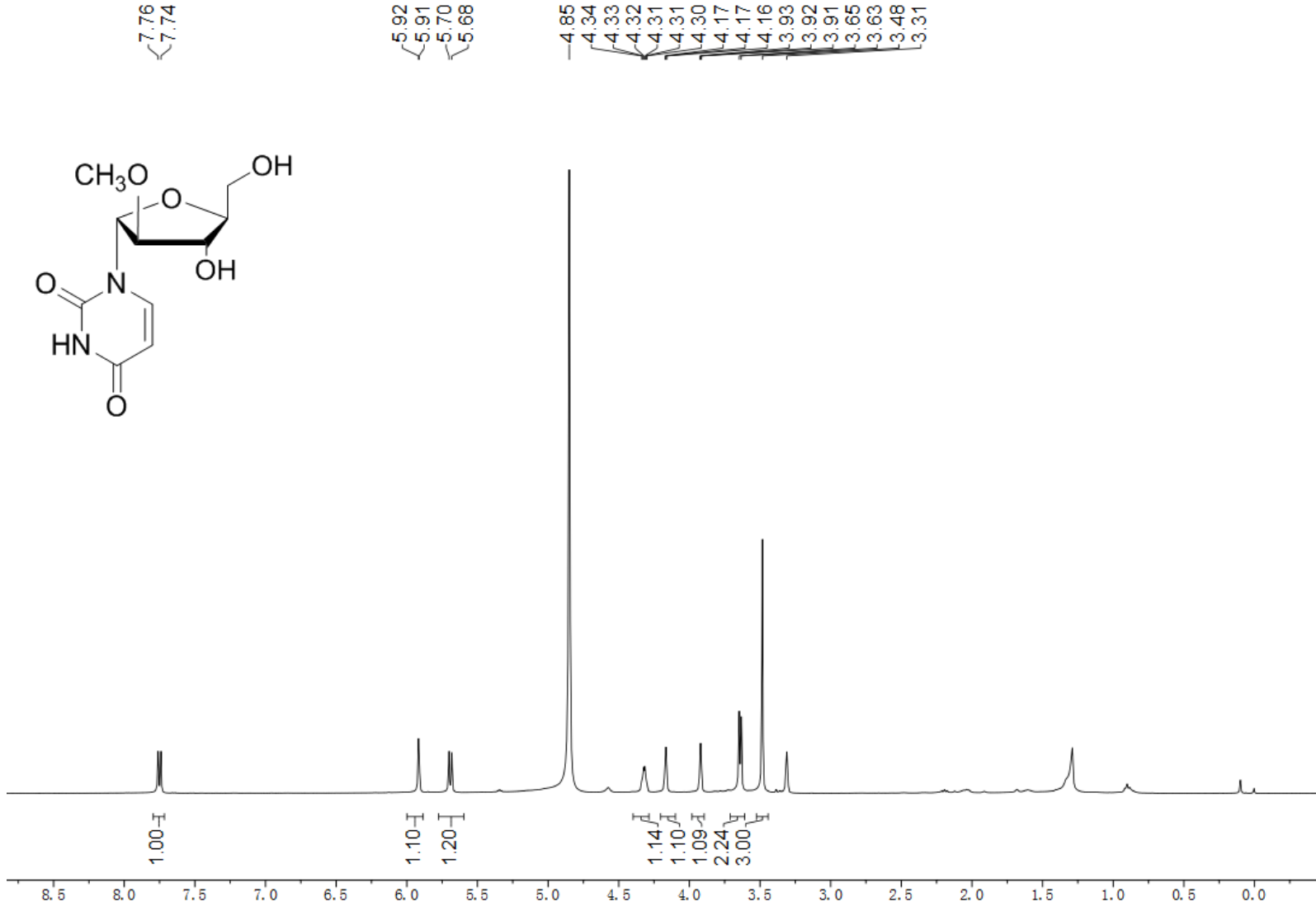
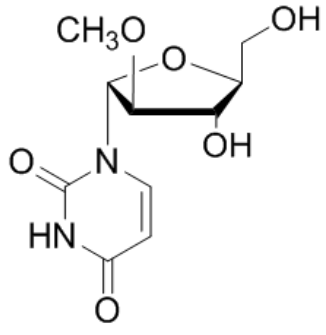
85.8
82.7
81.3
77.5
77.2
76.8
76.5

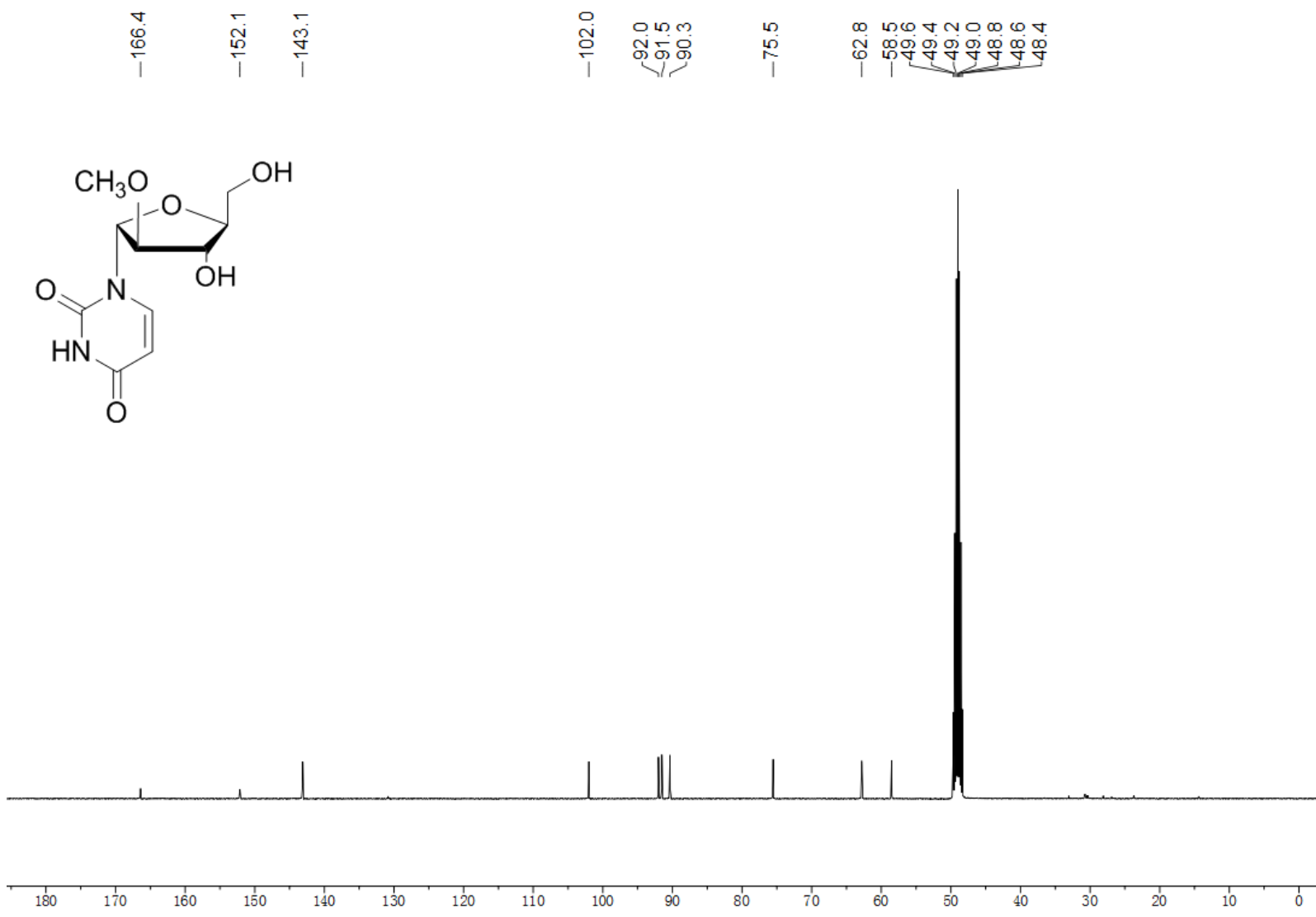
— 63.7
— 58.8

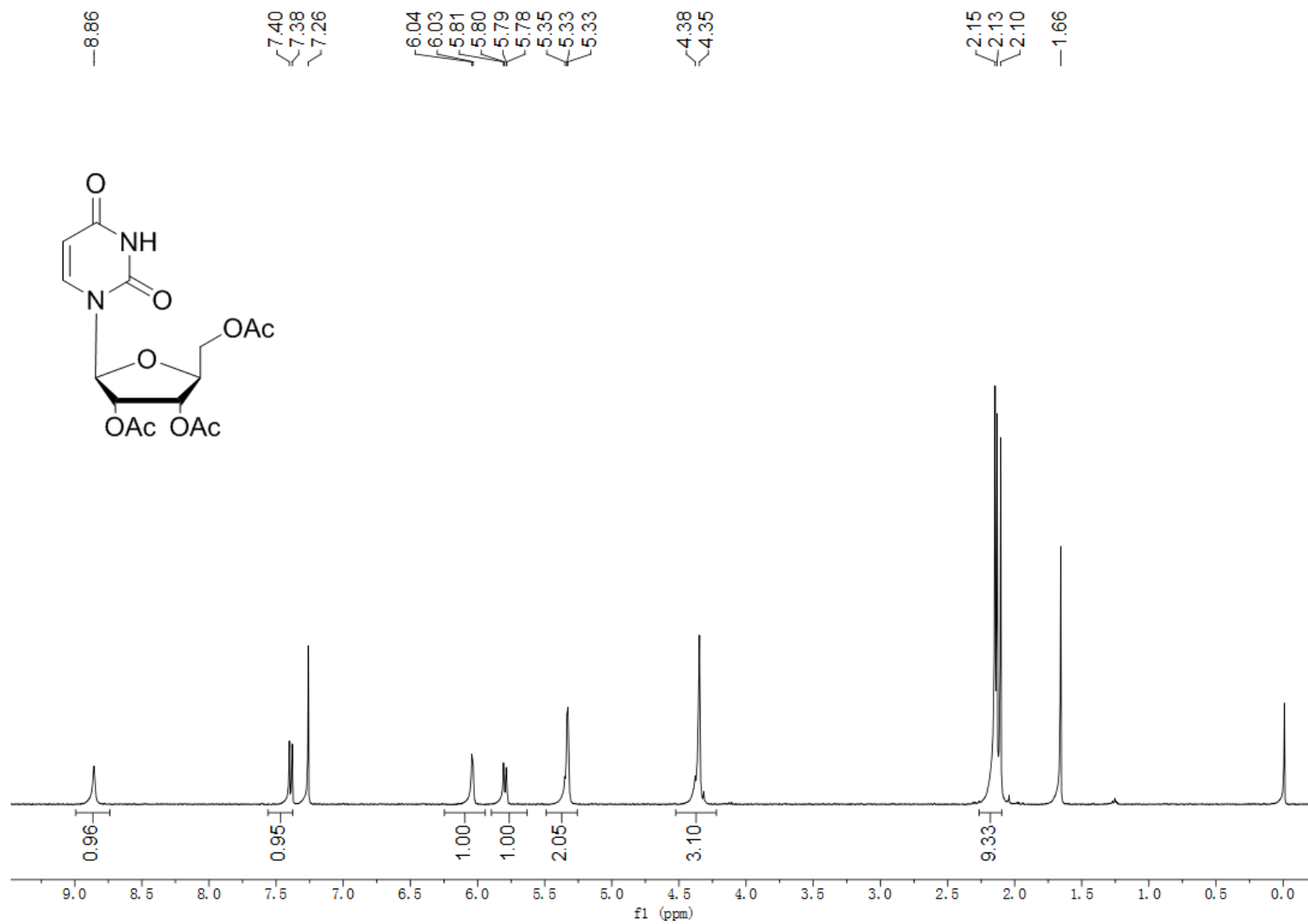
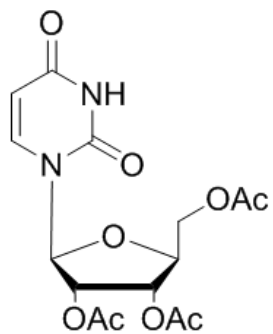








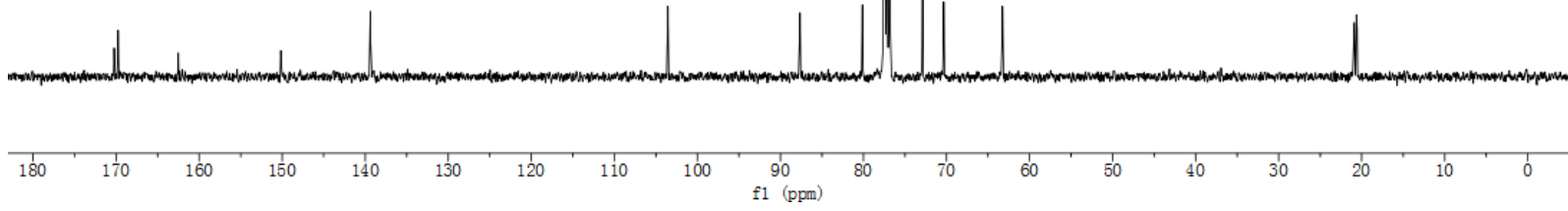
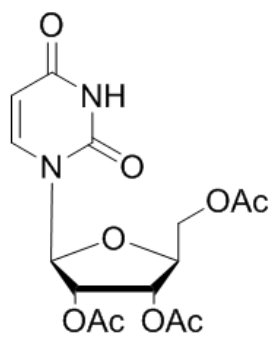


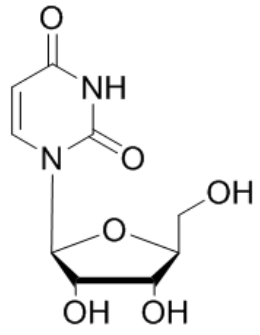


170.2
169.8
162.5
150.2
139.4

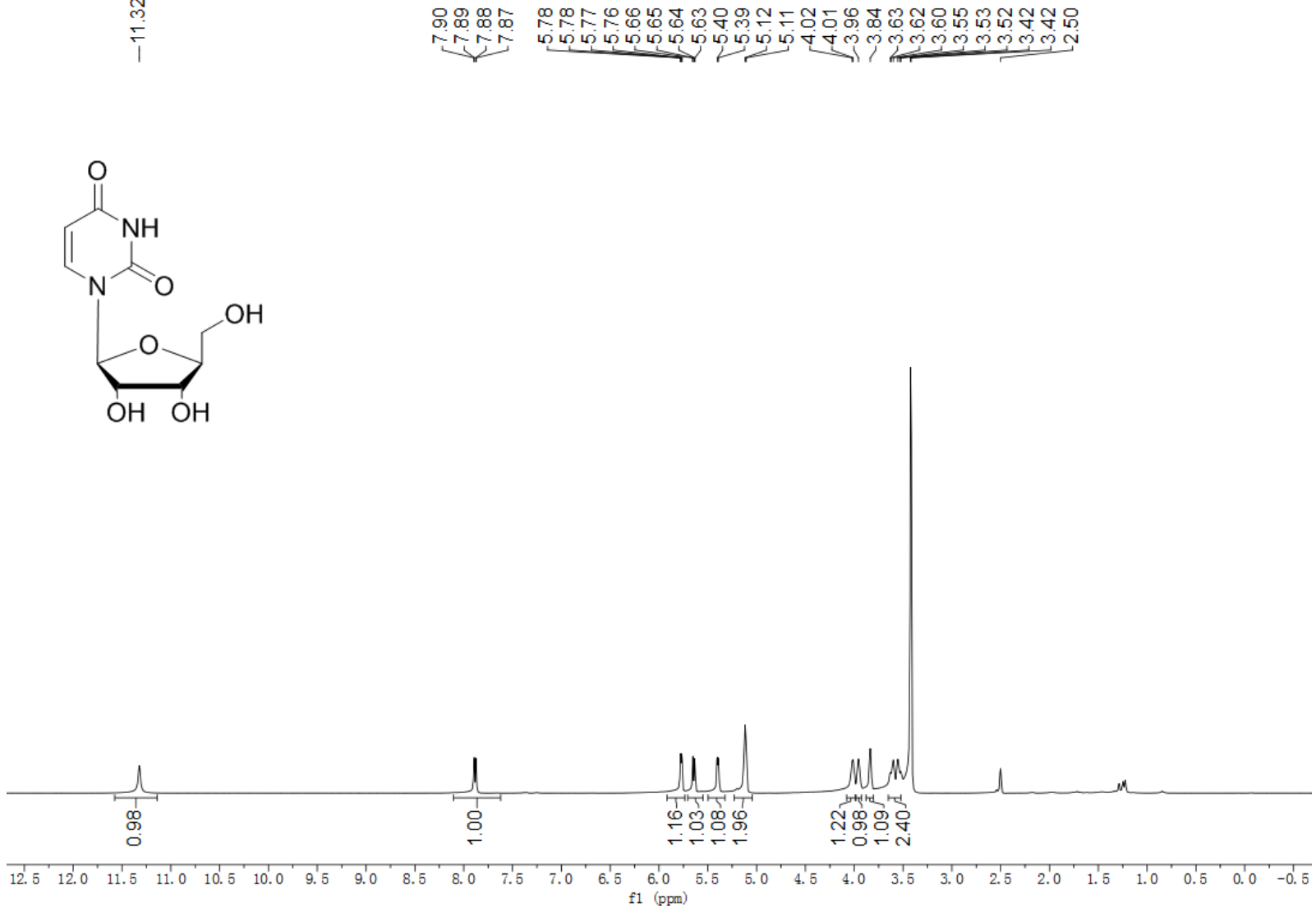
103.6
87.6
80.1
77.2
72.9
70.3
63.3

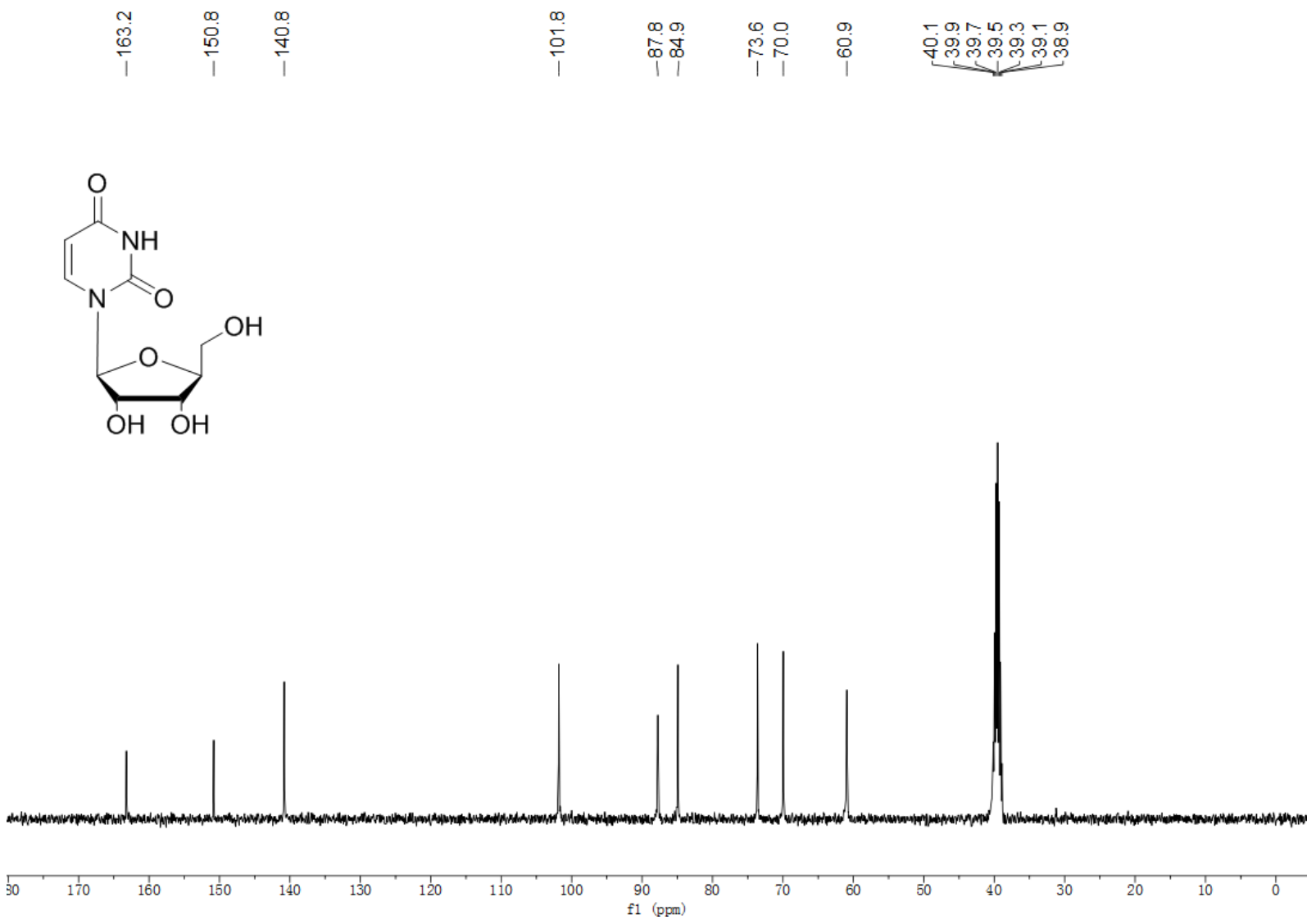
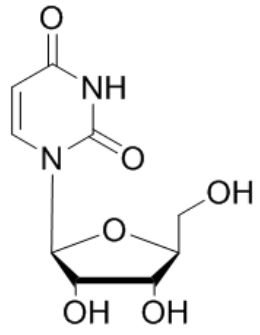
20.9
20.6
20.5

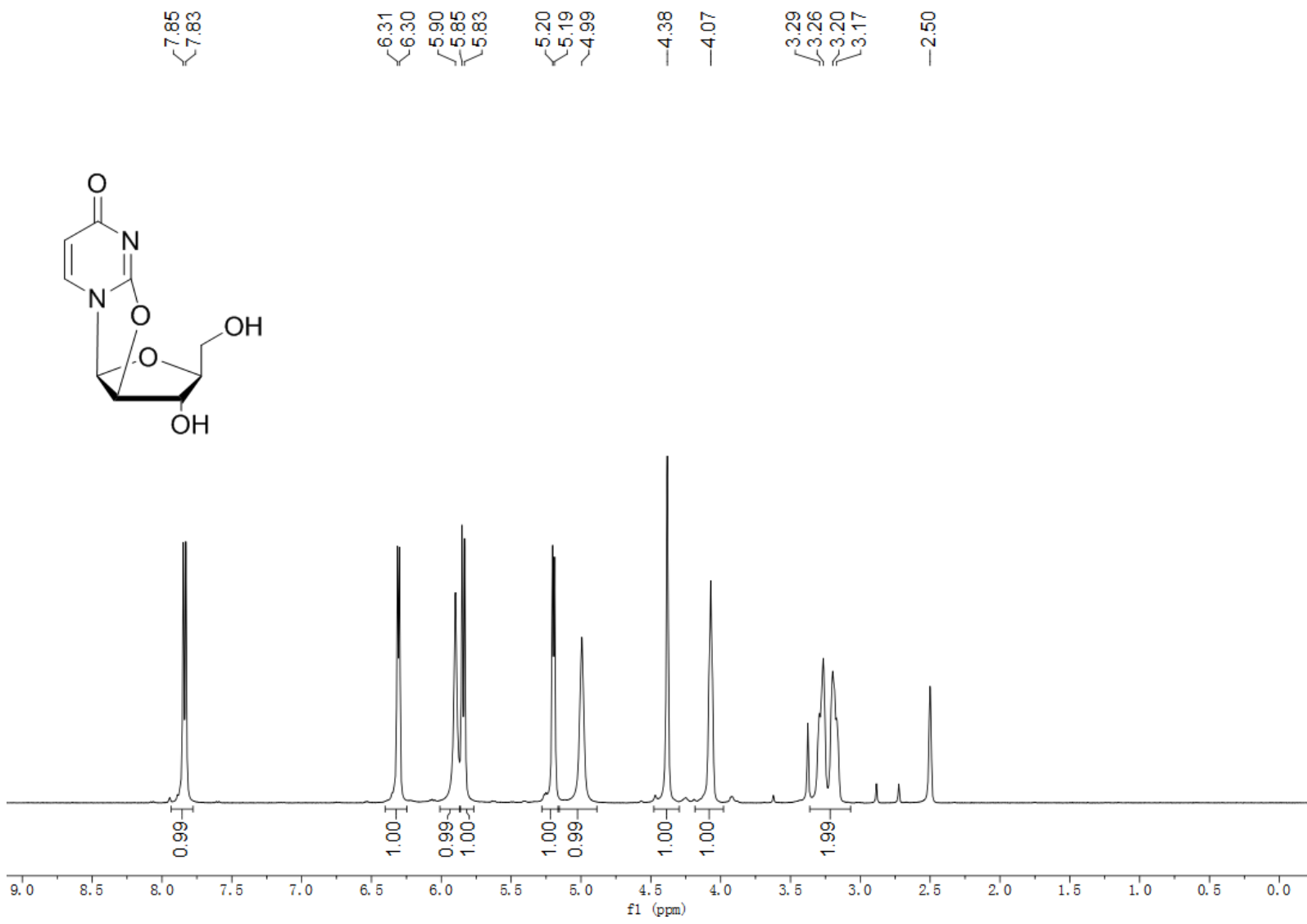
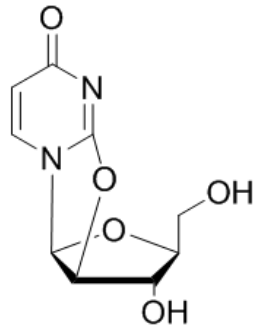


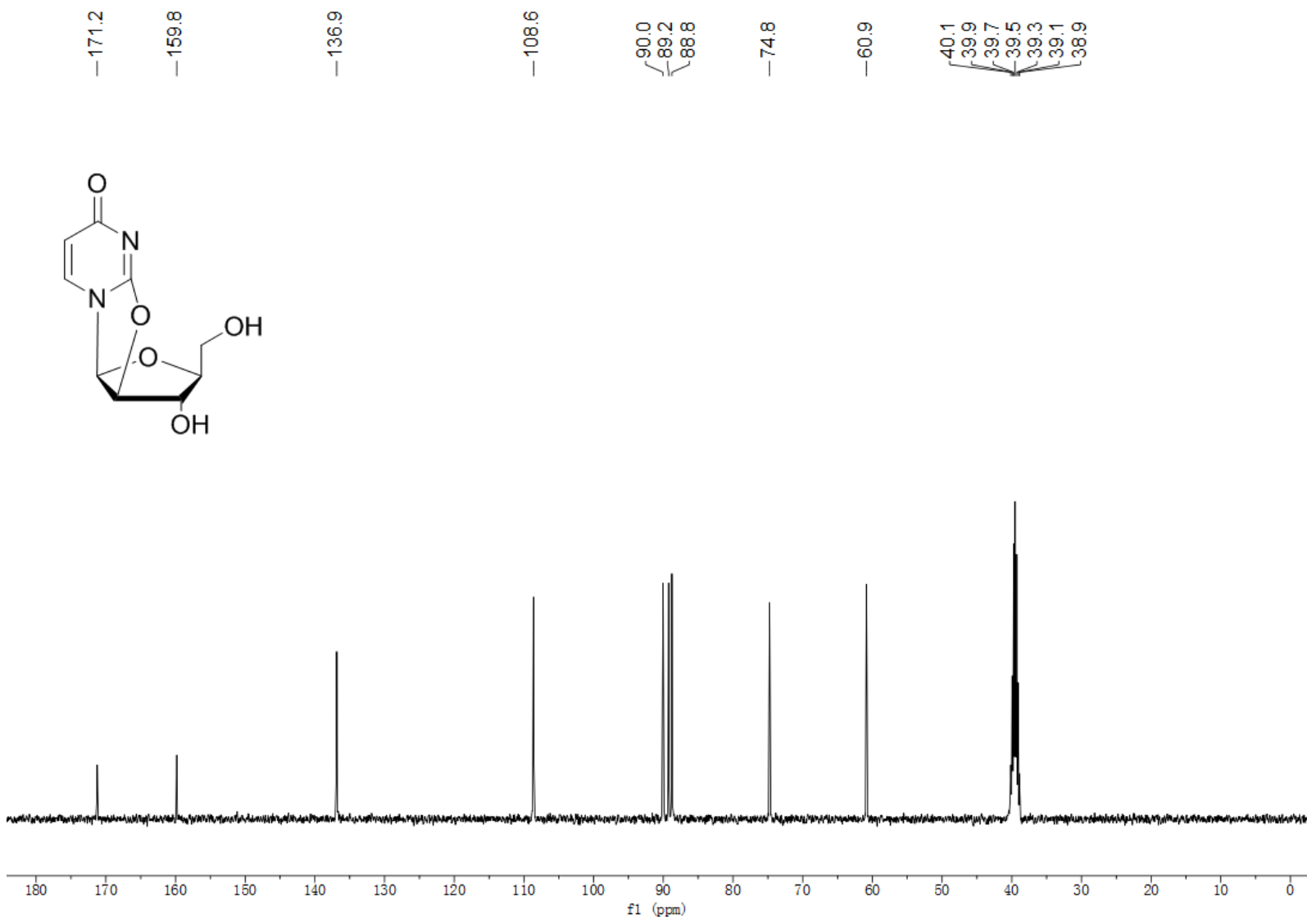
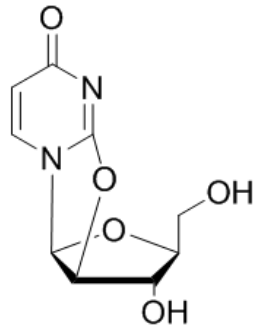


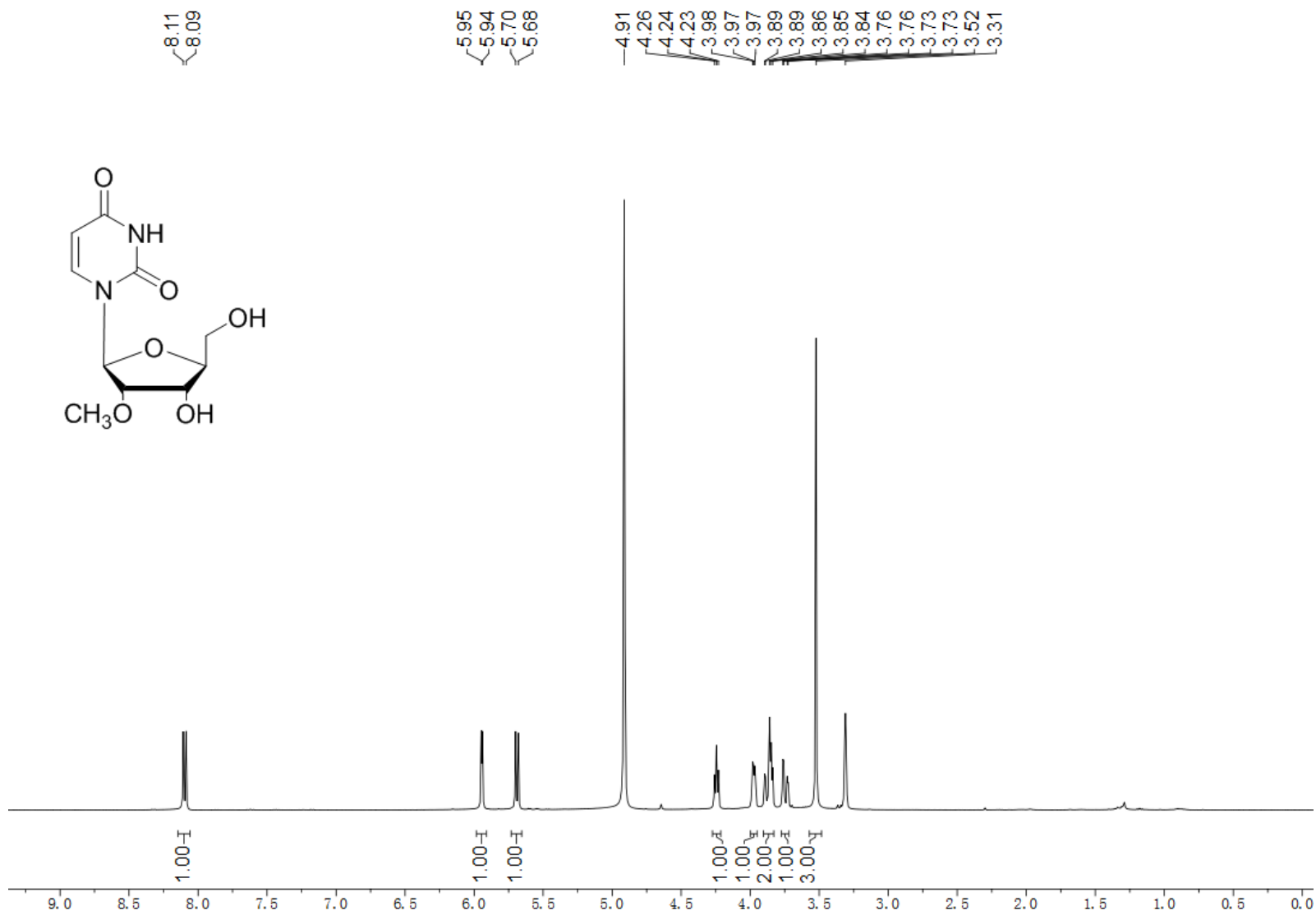
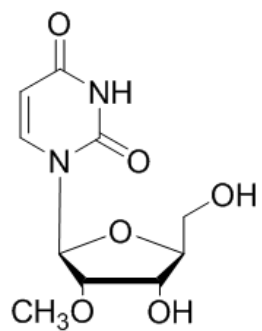
—11.32











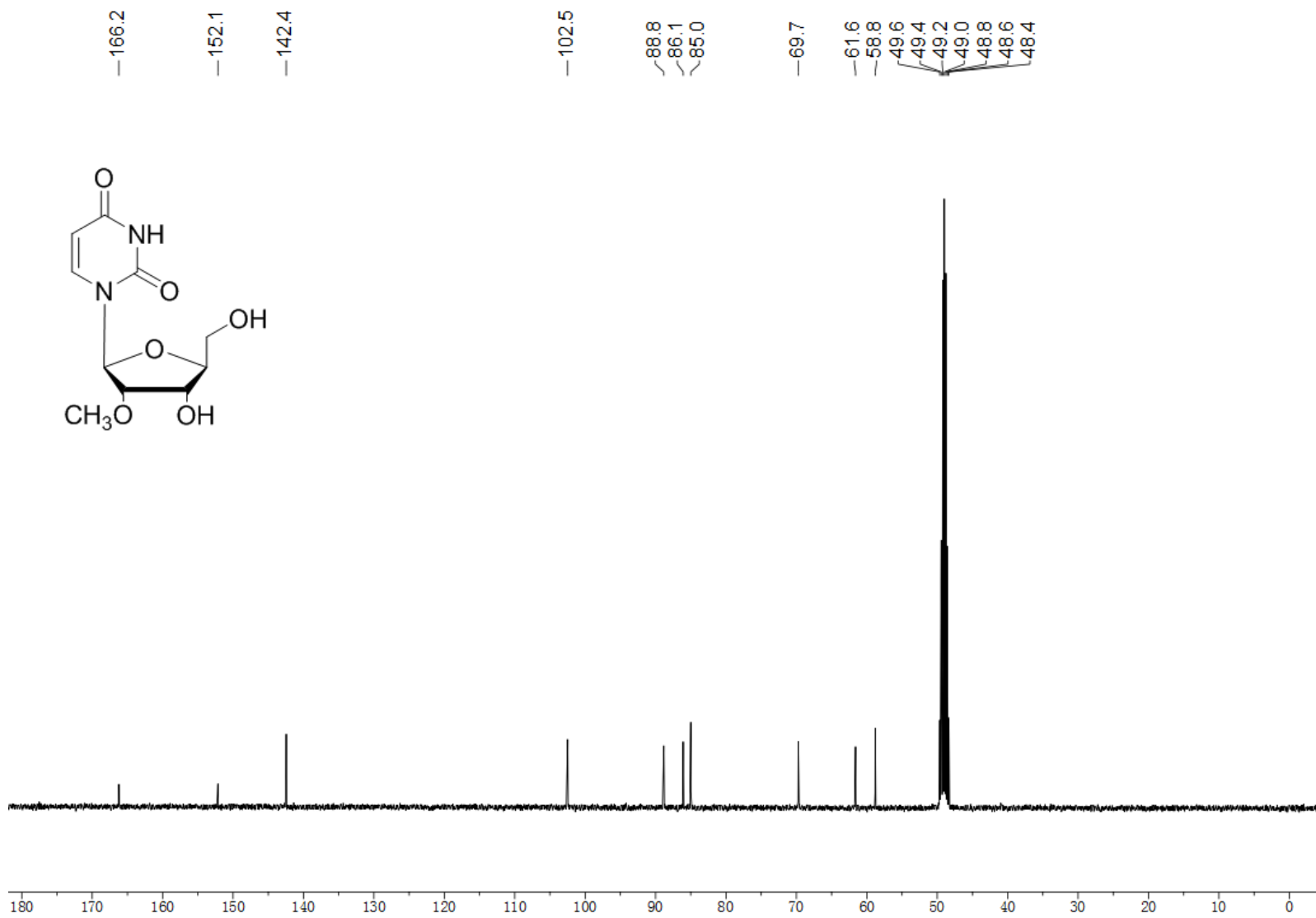
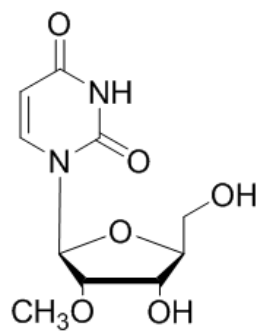


Table S1 Crystal data and structure refinement for 6.

| | |
|---|---|
| Identification code | 1 |
| Empirical formula | C ₂₆ H ₂₂ O ₈ |
| Formula weight | 462.43 |
| Temperature/K | 296(2) |
| Crystal system | orthorhombic |
| Space group | P2(1)2(1)2(1) |
| a/Å | 5.8763(16) |
| b/Å | 17.706(5) |
| c/Å | 24.914(7) |
| α/° | 90 |
| β/° | 90 |
| γ/° | 90 |
| Volume/Å ³ | 2592.2(12) |
| Z | 4 |
| ρ _{calc} /cm ³ | 1.185 |
| μ/mm ⁻¹ | 0.088 |
| F(000) | 968 |
| Crystal size/mm ³ | 0.280 x 0.260 x 0.240 |
| Radiation | MoKα (λ = 0.71073) |
| 2θ range for data collection/° | 5.418 to 49.99 |
| Index ranges | -6 ≤ h ≤ 6, -11 ≤ k ≤ 21, -29 ≤ l ≤ 26 |
| Reflections collected | 10840 |
| Independent reflections | 4518 [R(int) = 0.0398] |
| Data/restraints/parameters | 4518/0/307 |
| Goodness-of-fit on F ² | 1.024 |
| Final R indexes [I >= 2σ (I)] | R ₁ = 0.0698, wR ₂ = 0.1931 |
| Final R indexes [all data] | R ₁ = 0.1116, wR ₂ = 0.2253 |
| Largest diff. peak/hole / e Å ⁻³ | 0.442/-0.263 |

Table S2 Crystal data and structure refinement for 12.

| | |
|---|--|
| Identification code | 1 |
| Empirical formula | C ₁₈ H ₂₀ N ₄ O ₁₀ |
| Formula weight | 452.38 |
| Temperature/K | 296(2) |
| Crystal system | orthorhombic |
| Space group | P2(1)2(1)2(1) |
| a/Å | 7.4296(7) |
| b/Å | 13.6558(12) |
| c/Å | 18.1898(16) |
| α/° | 90 |
| β/° | 90 |
| γ/° | 90 |
| Volume/Å ³ | 1845.5(3) |
| Z | 4 |
| ρ _{calc} /cm ³ | 1.628 |
| μ/mm ⁻¹ | 0.135 |
| F(000) | 944 |
| Crystal size/mm ³ | 0.260 x 0.200 x 0.170 |
| Radiation | MoKα (λ = 0.71073) |
| 2θ range for data collection/° | 5.382 to 51.99 |
| Index ranges | -8 ≤ h ≤ 9, -16 ≤ k ≤ 15, -22 ≤ l ≤ 19 |
| Reflections collected | 10220 |
| Independent reflections | 3616 [R(int) = 0.0213] |
| Data/restraints/parameters | 3616/0/298 |
| Goodness-of-fit on F ² | 0.930 |
| Final R indexes [I >= 2σ (I)] | R ₁ = 0.0278, wR ₂ = 0.0693 |
| Final R indexes [all data] | R ₁ = 0.0311, wR ₂ = 0.0719 |
| Largest diff. peak/hole / e Å ⁻³ | 0.198/-0.144 |
